

DATASHEET

TFIIE-alpha Rabbit Polyclonal Antibody

CAT. NO. APA15780

KEY FEATURES

Target	TFIIE-alpha	Source / Host	Rabbit
Reactivity	Human, Mouse, Rat	Clonality	Polyclonal
Applications	WB, IHC, IF/ICC	Conjugation	Unconjugated
Form / Buffer	Liquid in 0.42% Potassium phosphate, 0.87% Sodium chloride, pH 7.3, 30% glycerol, and 0.01% sodium azide.		Storage at-20°C

BACKGROUND

Recruits TFIIF to the initiation complex and stimulates the RNA polymerase II C-terminal domain kinase and DNA-dependent ATPase activities of TFIIF. Both TFIIF and TFIIE are required for promoter clearance by RNA polymerase.

APPLICATION

To ensure optimal assay performance, AREX recommends conducting reagent titration tailored to each testing system for optimal detection results.

WB	1:500 - 1:2000
IHC	1:50 - 1:200
IF/ICC	1:50 - 1:200

*Results are sample-specific. Please refer to your local assay conditions and test parameters for reference.

PRODUCT OVERVIEW

Description	Rabbit polyclonal antibody to TFIIE-alpha
Specificity	Recognizes endogenous levels of TFIIE-alpha protein
Antibody Type	Primary antibody
Immunogen	Recombinant fusion protein of human TFIIE-alpha. The exact sequence is proprietary.
Purification	The antibody was purified by immunogen affinity chromatography.
Molecular Weight	Predicted: 49 kD; Observed: 60 kD
Form/Buffer	Liquid in 0.42% Potassium phosphate, 0.87% Sodium chloride, pH 7.3, 30% glycerol, and 0.01% sodium azide.
Alternative Names	TF2E1; General transcription factor IIE subunit 1; General transcription factor IIE 56 kDa subunit; Transcription initiation factor IIE subunit alpha; TFIIE-alpha
Gene Symbol	GTF2E1
Entrez Gene	2960(Human); 74197(Mouse)
SwissProt	P29083(Human); Q9D0D5(Mouse)

*AREX continuously optimizes our products. Webpage content may not reflect the latest updates. For inquiries, please contact info@arexbio.com or your local distributor.

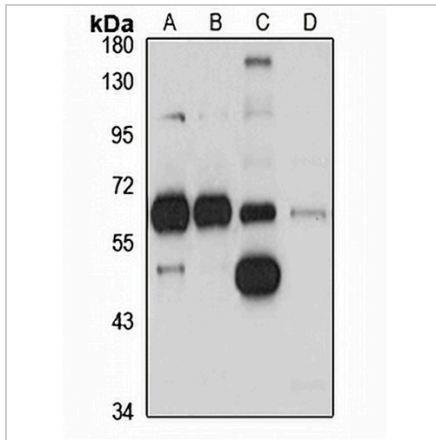
*Clone Number, Reactivity, Source/Host and Clonality can be found in the product name and Key Features section above.

DATASHEET

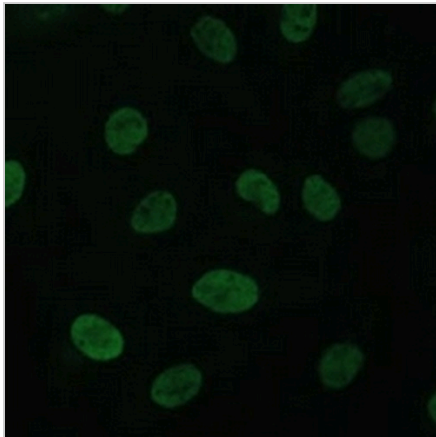
TFIIE-alpha Rabbit Polyclonal Antibody

CAT. NO. APA15780

DATA



Western blot analysis of TFIIE-alpha expression in Jurkat (A), A431 (B), mouse brain (C), mouse spleen (D) whole cell lysates. (Predicted band size: 49 kD; Observed band size: 60 kD)



Immunofluorescent analysis of TFIIE-alpha staining in U2OS cells. Formalin-fixed cells were permeabilized with 0.1% Triton X-100 in TBS for 5-10 minutes and blocked with 3% BSA-PBS for 30 minutes at room temperature. Cells were probed with the primary antibody in 3% BSA-PBS and incubated overnight at 4 °C in a humidified chamber. Cells were washed with PBST and incubated with a Alexa Fluor 488-conjugated secondary antibody (green) in PBS at room temperature in the dark.

STORAGE

Store at 4°C short term. For long term storage, store at -20°C, avoiding freeze/thaw cycles.

NOTE

For Research Use Only. Not for diagnostic, therapeutics, prophylactic or in vivo use.