

DATASHEET

GTF2H2 Rabbit Polyclonal Antibody

CAT. NO. APA15781

KEY FEATURES

| | | | |
|---------------|---|---------------|---------------------|
| Target | GTF2H2 | Source / Host | Rabbit |
| Reactivity | Human, Mouse, Rat | Clonality | Polyclonal |
| Applications | WB | Conjugation | Unconjugated |
| Form / Buffer | Liquid in 0.42% Potassium phosphate, 0.87% Sodium chloride, pH 7.3, 30% glycerol, and 0.01% sodium azide. | | Storage at -20°C |

BACKGROUND

Component of the general transcription and DNA repair factor IIH (TFIIH) core complex, which is involved in general and transcription-coupled nucleotide excision repair (NER) of damaged DNA and, when complexed to CAK, in RNA transcription by RNA polymerase II. In NER, TFIIH acts by opening DNA around the lesion to allow the excision of the damaged oligonucleotide and its replacement by a new DNA fragment. In transcription, TFIIH has an essential role in transcription initiation. When the pre-initiation complex (PIC) has been established, TFIIH is required for promoter opening and promoter escape. Phosphorylation of the C-terminal tail (CTD) of the largest subunit of RNA polymerase II by the kinase module CAK controls the initiation of transcription.

APPLICATION

To ensure optimal assay performance, AREX recommends conducting reagent titration tailored to each testing system for optimal detection results.

| | |
|----|----------------|
| WB | 1:500 - 1:1000 |
|----|----------------|

*Results are sample-specific. Please refer to your local assay conditions and test parameters for reference.

PRODUCT OVERVIEW

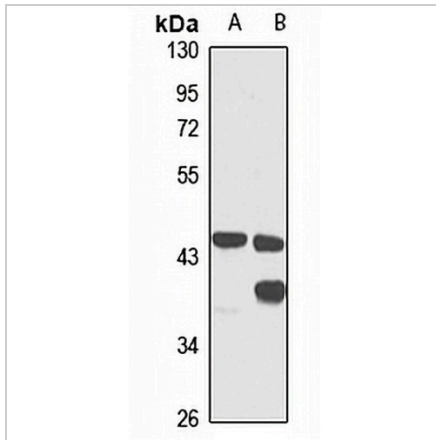
| | |
|-------------------|--|
| Description | Rabbit polyclonal antibody to GTF2H2 |
| Specificity | Recognizes endogenous levels of GTF2H2 protein |
| Antibody Type | Primary antibody |
| Immunogen | KLH-conjugated synthetic peptide of human GTF2H2. The exact sequence is proprietary. |
| Purification | The antibody was purified by immunogen affinity chromatography. |
| Molecular Weight | Predicted: 44 kD; Observed: 44 kD |
| Form/Buffer | Liquid in 0.42% Potassium phosphate, 0.87% Sodium chloride, pH 7.3, 30% glycerol, and 0.01% sodium azide. |
| Alternative Names | BTF2P44; General transcription factor IIH subunit 2; Basic transcription factor 2 44 kDa subunit; BTF2 p44; General transcription factor IIH polypeptide 2; TFIIH basal transcription factor complex p44 subunit |
| Gene Symbol | GTF2H2 |
| Entrez Gene | 2966; 728340(Human); 23894(Mouse); 294693(Rat) |
| SwissProt | Q13888(Human); Q9JIB4(Mouse); A0JN27(Rat) |

*AREX continuously optimizes our products. Webpage content may not reflect the latest updates. For inquiries, please contact info@arexbio.com or your local distributor.

*Clone Number, Reactivity, Source/Host and Clonality can be found in the product name and Key Features section above.

DATASHEET**GTF2H2 Rabbit Polyclonal Antibody**

CAT. NO. APA15781

DATA

Western blot analysis of GTF2H2 expression in mouse kidney (A), rat testis (B) whole cell lysates. (Predicted band size: 44 kD; Observed band size: 44 kD)

STORAGE

Store at 4°C short term. For long term storage, store at -20°C, avoiding freeze/thaw cycles.

NOTE

For Research Use Only. Not for diagnostic, therapeutics, prophylactic or in vivo use.