

DATASHEET

GTPBP1 Rabbit Polyclonal Antibody

CAT. NO. APA15785

KEY FEATURES

Target	GTPBP1	Source / Host	Rabbit
Reactivity	Human, Mouse, Rat	Clonality	Polyclonal
Applications	WB	Conjugation	Unconjugated
Form / Buffer	Liquid in 0.42% Potassium phosphate, 0.87% Sodium chloride, pH 7.3, 30% glycerol, and 0.01% sodium azide.		Storage at -20°C

BACKGROUND

GTPase that plays a role in the elongation phase of protein synthesis by forming ternary complexes with GTP and aminoacyl-transfer RNAs (aa-tRNAs), and delivering aa-tRNAs to the ribosomal A site in a GTP-dependent manner, and delivering aa-tRNAs to the ribosomal A site in a GTP-dependent manner. It is also able to deliver deacylated tRNA to the A site. Additionally, it is involved in RNA quality control; after GTP hydrolysis, which is not immediately followed by rapid peptide bond formation, GTPBP1 likely retains aa-tRNA in the A site and promotes exosomal degradation of faulty mRNAs engaged in 80S elongation complexes. Plays a role in the regulation of circadian mRNA stability.

APPLICATION

To ensure optimal assay performance, AREX recommends conducting reagent titration tailored to each testing system for optimal detection results.

WB	1:500 - 1:2000
----	----------------

*Results are sample-specific. Please refer to your local assay conditions and test parameters for reference.

PRODUCT OVERVIEW

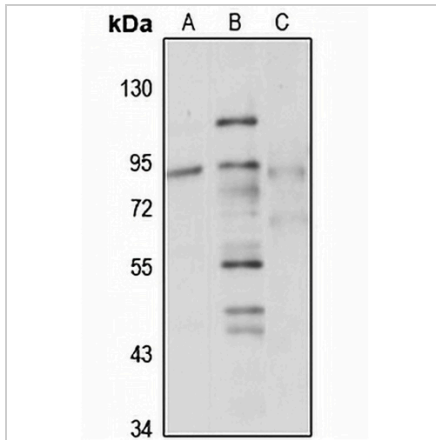
Description	Rabbit polyclonal antibody to GTPBP1
Specificity	Recognizes endogenous levels of GTPBP1 protein
Antibody Type	Primary antibody
Immunogen	Recombinant fusion protein of human GTPBP1. The exact sequence is proprietary.
Purification	The antibody was purified by immunogen affinity chromatography.
Molecular Weight	Predicted: 72 kD; Observed: 72 kD
Form/Buffer	Liquid in 0.42% Potassium phosphate, 0.87% Sodium chloride, pH 7.3, 30% glycerol, and 0.01% sodium azide.
Alternative Names	GTP-binding protein 1; G-protein 1; GP-1; GP1
Gene Symbol	GTPBP1
Entrez Gene	9567(Human); 14904(Mouse); 300077(Rat)
SwissProt	O00178(Human); O08582(Mouse); D2XV59(Rat)

*AREX continuously optimizes our products. Webpage content may not reflect the latest updates. For inquiries, please contact info@arexbio.com or your local distributor.

*Clone Number, Reactivity, Source/Host and Clonality can be found in the product name and Key Features section above.

DATASHEET**GTPBP1 Rabbit Polyclonal Antibody**

CAT. NO. APA15785

DATA

Western blot analysis of GTPBP1 expression in Jurkat (A), HeLa (B), mouse thymus (C) whole cell lysates. (Predicted band size: 72 kD; Observed band size: 72 kD)

STORAGE

Store at 4°C short term. For long term storage, store at -20°C, avoiding freeze/thaw cycles.

NOTE

For Research Use Only. Not for diagnostic, therapeutics, prophylactic or in vivo use.