

DATASHEET

GTSE1 Rabbit Polyclonal Antibody

CAT. NO. APA15786

KEY FEATURES

Target	GTSE1	Source / Host	Rabbit
Reactivity	Human, Mouse, Rat	Clonality	Polyclonal
Applications	WB	Conjugation	Unconjugated
Form / Buffer	Liquid in 0.42% Potassium phosphate, 0.87% Sodium chloride, pH 7.3, 30% glycerol, and 0.01% sodium azide.		Storage at -20°C

BACKGROUND

May be involved in p53-induced cell cycle arrest in G2/M phase by interfering with microtubule rearrangements that are required to enter mitosis. Overexpression delays G2/M phase progression.

APPLICATION

To ensure optimal assay performance, AREX recommends conducting reagent titration tailored to each testing system for optimal detection results.

WB	1:500 - 1:2000
----	----------------

*Results are sample-specific. Please refer to your local assay conditions and test parameters for reference.

PRODUCT OVERVIEW

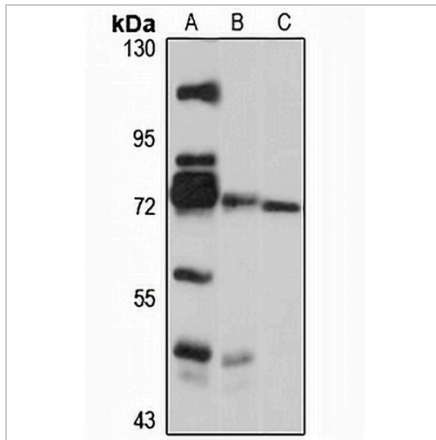
Description	Rabbit polyclonal antibody to GTSE1
Specificity	Recognizes endogenous levels of GTSE1 protein
Antibody Type	Primary antibody
Immunogen	Recombinant fusion protein of human GTSE1. The exact sequence is proprietary.
Purification	The antibody was purified by immunogen affinity chromatography.
Molecular Weight	Predicted: 76 kD; Observed: 77 kD
Form/Buffer	Liquid in 0.42% Potassium phosphate, 0.87% Sodium chloride, pH 7.3, 30% glycerol, and 0.01% sodium azide.
Alternative Names	G2 and S phase-expressed protein 1; GTSE-1; Protein B99 homolog
Gene Symbol	GTSE1
Entrez Gene	51512(Human); 29870(Mouse)
SwissProt	Q9NYZ3(Human); Q8R080(Mouse)

*AREX continuously optimizes our products. Webpage content may not reflect the latest updates. For inquiries, please contact info@arexbio.com or your local distributor.

*Clone Number, Reactivity, Source/Host and Clonality can be found in the product name and Key Features section above.

DATASHEET**GTSE1 Rabbit Polyclonal Antibody**

CAT. NO. APA15786

DATA

Western blot analysis of GTSE1 expression in HeLa (A), mouse spleen (B), rat spleen (C) whole cell lysates. (Predicted band size: 76 kD; Observed band size: 77 kD)

STORAGE

Store at 4°C short term. For long term storage, store at -20°C, avoiding freeze/thaw cycles.

NOTE

For Research Use Only. Not for diagnostic, therapeutics, prophylactic or in vivo use.