

## DATASHEET

# GC-C Rabbit Polyclonal Antibody

CAT. NO. APA15787

### KEY FEATURES

Target	GC-C	Source / Host	Rabbit
Reactivity	Human, Mouse, Rat	Clonality	Polyclonal
Applications	WB	Conjugation	Unconjugated
Form / Buffer	Liquid in 0.42% Potassium phosphate, 0.87% Sodium chloride, pH 7.3, 30% glycerol, and 0.01% sodium azide.		Storage at-20°C

### BACKGROUND

Guanylyl cyclase that catalyzes synthesis of cyclic GMP (cGMP) from GTP from GTP . Receptor for the E.coli heat-stable enterotoxin; E.coli enterotoxin markedly stimulates the accumulation of cGMP in mammalian cells expressing GUCY2C . Also activated by the endogenous peptides guanylin and uroguanylin .

### APPLICATION

To ensure optimal assay performance, AREX recommends conducting reagent titration tailored to each testing system for optimal detection results.

WB	1:500 - 1:2000
----	----------------

\*Results are sample-specific. Please refer to your local assay conditions and test parameters for reference.

### PRODUCT OVERVIEW

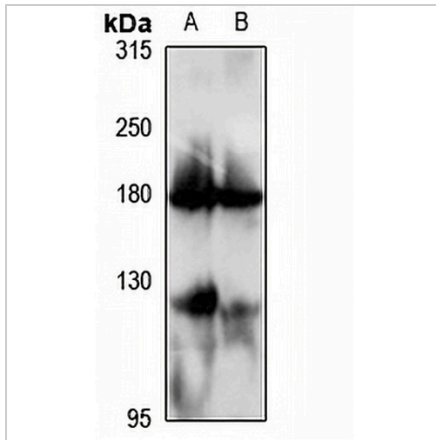
Description	Rabbit polyclonal antibody to GC-C
Specificity	Recognizes endogenous levels of GC-C protein
Antibody Type	Primary antibody
Immunogen	Recombinant fusion protein of human GC-C. The exact sequence is proprietary.
Purification	The antibody was purified by immunogen affinity chromatography.
Molecular Weight	Predicted: 123 kD; Observed: 123 kD
Form/Buffer	Liquid in 0.42% Potassium phosphate, 0.87% Sodium chloride, pH 7.3, 30% glycerol, and 0.01% sodium azide.
Alternative Names	GUC2C; STAR; Heat-stable enterotoxin receptor; STA receptor; hSTAR; Guanylyl cyclase C; GC-C; Intestinal guanylate cyclase
Gene Symbol	GUCY2C
Entrez Gene	2984(Human); 14917(Mouse); 25711(Rat)
SwissProt	P25092(Human); Q3UWA6(Mouse); P23897(Rat)

\*AREX continuously optimizes our products. Webpage content may not reflect the latest updates. For inquiries, please contact [info@arexbio.com](mailto:info@arexbio.com) or your local distributor.

\*Clone Number, Reactivity, Source/Host and Clonality can be found in the product name and Key Features section above.

**DATASHEET****GC-C Rabbit Polyclonal Antibody**

CAT. NO. APA15787

**DATA**

Western blot analysis of GC-C expression in SW480 (A), mouse pancreas (B) whole cell lysates. (Predicted band size: 123 kD; Observed band size: 123 kD)

**STORAGE**

Store at 4°C short term. For long term storage, store at -20°C, avoiding freeze/thaw cycles.

**NOTE**

For Research Use Only. Not for diagnostic, therapeutics, prophylactic or in vivo use.