

DATASHEET

GUK1 Rabbit Polyclonal Antibody

CAT. NO. APA15788

KEY FEATURES

Target	GUK1	Source / Host	Rabbit
Reactivity	Human	Clonality	Polyclonal
Applications	WB	Conjugation	Unconjugated
Form / Buffer	Liquid in 0.42% Potassium phosphate, 0.87% Sodium chloride, pH 7.3, 30% glycerol, and 0.01% sodium azide.		Storage at -20°C

BACKGROUND

Catalyzes the phosphorylation of GMP to GDP. Essential enzyme for recycling GMP and indirectly, cyclic GMP (cGMP). Involved in the cGMP metabolism in photoreceptors. It may also have a role in the survival and growth progression of some tumors. In addition to its physiological role, GUK1 is essential for converting prodrugs used for the treatment of cancers and viral infections into their pharmacologically active metabolites, most notably acyclovir, ganciclovir, and 6-thioguanine and its closely related analog 6-mercaptopurine.

APPLICATION

To ensure optimal assay performance, AREX recommends conducting reagent titration tailored to each testing system for optimal detection results.

WB	1:500 - 1:2000
----	----------------

*Results are sample-specific. Please refer to your local assay conditions and test parameters for reference.

PRODUCT OVERVIEW

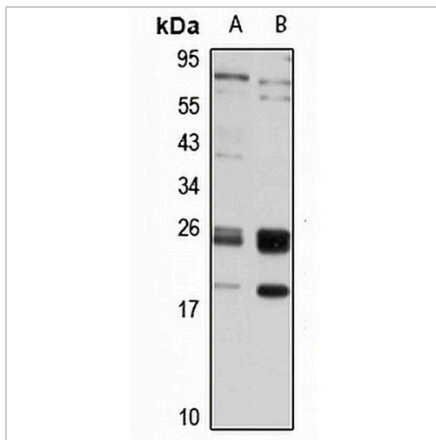
Description	Rabbit polyclonal antibody to GUK1
Specificity	Recognizes endogenous levels of GUK1 protein
Antibody Type	Primary antibody
Immunogen	Recombinant fusion protein of human GUK1. The exact sequence is proprietary.
Purification	The antibody was purified by immunogen affinity chromatography.
Molecular Weight	Predicted: 21; Observed: 21 kD
Form/Buffer	Liquid in 0.42% Potassium phosphate, 0.87% Sodium chloride, pH 7.3, 30% glycerol, and 0.01% sodium azide.
Alternative Names	GMK; Guanylate kinase; GMP kinase
Gene Symbol	GUK1
Entrez Gene	2987(Human)
SwissProt	Q16774(Human)

*AREX continuously optimizes our products. Webpage content may not reflect the latest updates. For inquiries, please contact info@arexbio.com or your local distributor.

*Clone Number, Reactivity, Source/Host and Clonality can be found in the product name and Key Features section above.

DATASHEET**GUK1 Rabbit Polyclonal Antibody**

CAT. NO. APA15788

DATA**STORAGE**

Store at 4°C short term. For long term storage, store at -20°C, avoiding freeze/thaw cycles.

NOTE

For Research Use Only. Not for diagnostic, therapeutics, prophylactic or in vivo use.