

**DATASHEET**

**GULP Rabbit Polyclonal Antibody**

CAT. NO. APA15789

**KEY FEATURES**

Target	GULP	Source / Host	Rabbit
Reactivity	Human, Mouse, Rat	Clonality	Polyclonal
Applications	WB, IHC	Conjugation	Unconjugated
Form / Buffer	Liquid in 0.42% Potassium phosphate, 0.87% Sodium chloride, pH 7.3, 30% glycerol, and 0.01% sodium azide.		Storage at -20°C

**BACKGROUND**

May function as an adapter protein. Required for efficient phagocytosis of apoptotic cells. Modulates cellular glycosphingolipid and cholesterol transport. May play a role in the internalization and endosomal trafficking of various LRP1 ligands, such as PSAP. Increases cellular levels of GTP-bound ARF6.

**APPLICATION**

To ensure optimal assay performance, AREX recommends conducting reagent titration tailored to each testing system for optimal detection results.

WB	1:500 - 1:2000
IHC	1:50 - 1:200

\*Results are sample-specific. Please refer to your local assay conditions and test parameters for reference.

**PRODUCT OVERVIEW**

Description	Rabbit polyclonal antibody to GULP
Specificity	Recognizes endogenous levels of GULP protein
Antibody Type	Primary antibody
Immunogen	Recombinant fusion protein of human GULP. The exact sequence is proprietary.
Purification	The antibody was purified by immunogen affinity chromatography.
Molecular Weight	Predicted: 19; Observed: 34 kD
Form/Buffer	Liquid in 0.42% Potassium phosphate, 0.87% Sodium chloride, pH 7.3, 30% glycerol, and 0.01% sodium azide.
Alternative Names	CED6; GULP; PTB domain-containing engulfment adapter protein 1; Cell death protein 6 homolog; PTB domain adapter protein CED-6; Protein GULP
Gene Symbol	GULP1
Entrez Gene	51454(Human); 70676(Mouse); 314543(Rat)
SwissProt	Q9UBP9(Human); Q8K2A1(Mouse); Q5PQS4(Rat)

\*AREX continuously optimizes our products. Webpage content may not reflect the latest updates. For inquiries, please contact [info@arexbio.com](mailto:info@arexbio.com) or your local distributor.

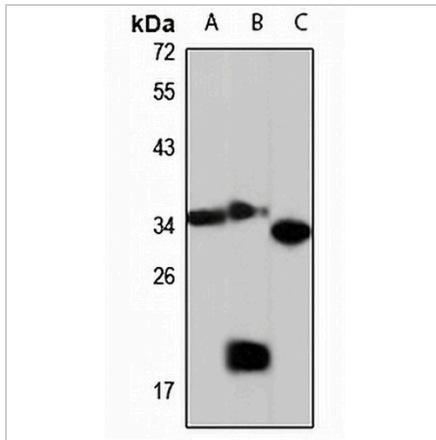
\*Clone Number, Reactivity, Source/Host and Clonality can be found in the product name and Key Features section above.

**DATASHEET**

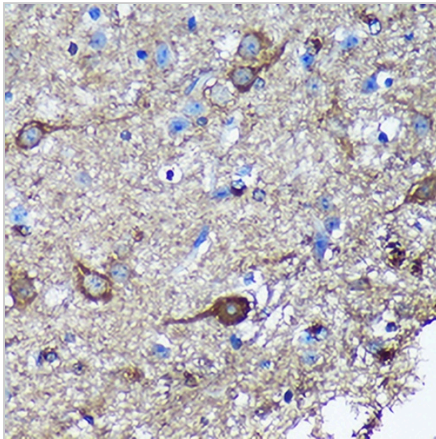
**GULP Rabbit Polyclonal Antibody**

CAT. NO. APA15789

**DATA**



Western blot analysis of GULP expression in HT29 (A), mouse lung (B), rat brain (C) whole cell lysates. (Predicted band size: 19; 22; 33; 34 kD; Observed band size: 34 kD)



Immunohistochemical analysis of GULP staining in mouse spinal cord formalin fixed paraffin embedded tissue section. The section was pre-treated using heat mediated antigen retrieval with sodium citrate buffer (pH 6.0). The section was then incubated with the antibody at room temperature and detected using an HRP conjugated compact polymer system. DAB was used as the chromogen. The section was then counterstained with haematoxylin and mounted with DPX.

**STORAGE**

Store at 4°C short term. For long term storage, store at -20°C, avoiding freeze/thaw cycles.

**NOTE**

For Research Use Only. Not for diagnostic, therapeutics, prophylactic or in vivo use.