

DATASHEET

CD236 Rabbit Polyclonal Antibody

CAT. NO. APA15790

KEY FEATURES

Target	CD236	Source / Host	Rabbit
Reactivity	Human, Mouse	Clonality	Polyclonal
Applications	WB	Conjugation	Unconjugated
Form / Buffer	Liquid in 0.42% Potassium phosphate, 0.87% Sodium chloride, pH 7.3, 30% glycerol, and 0.01% sodium azide.		Storage at -20°C

BACKGROUND

This protein is a minor sialoglycoprotein in human erythrocyte membranes. The blood group Gerbich antigens and receptors for Plasmodium falciparum merozoites are most likely located within the extracellular domain. Glycophorin-C plays an important role in regulating the stability of red cells.

APPLICATION

To ensure optimal assay performance, AREX recommends conducting reagent titration tailored to each testing system for optimal detection results.

WB	1:500 - 1:1000
----	----------------

*Results are sample-specific. Please refer to your local assay conditions and test parameters for reference.

PRODUCT OVERVIEW

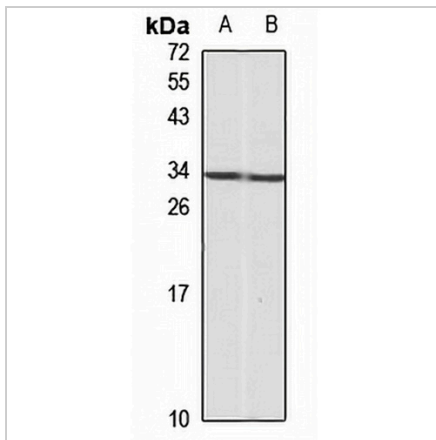
Description	Rabbit polyclonal antibody to CD236
Specificity	Recognizes endogenous levels of CD236 protein
Antibody Type	Primary antibody
Immunogen	Recombinant fusion protein of human CD236. The exact sequence is proprietary.
Purification	The antibody was purified by immunogen affinity chromatography.
Molecular Weight	Predicted: 11; Observed: 34 kD
Form/Buffer	Liquid in 0.42% Potassium phosphate, 0.87% Sodium chloride, pH 7.3, 30% glycerol, and 0.01% sodium azide.
Alternative Names	GLPC; GPC; Glycophorin-C; Glycoconnectin; Glycophorin-D; GPD; Glycoprotein beta; PAS-2'; Sialoglycoprotein D; CD236
Gene Symbol	GYPC
Entrez Gene	2995(Human); 71683(Mouse)
SwissProt	P04921(Human); Q78HU7(Mouse)

*AREX continuously optimizes our products. Webpage content may not reflect the latest updates. For inquiries, please contact info@arexbio.com or your local distributor.

*Clone Number, Reactivity, Source/Host and Clonality can be found in the product name and Key Features section above.

DATASHEET**CD236 Rabbit Polyclonal Antibody**

CAT. NO. APA15790

DATA

Western blot analysis of CD236 expression in HL60 (A), mouse heart (B) whole cell lysates. (Predicted band size: 11; 13 kD; Observed band size: 34 kD)

STORAGE

Store at 4°C short term. For long term storage, store at -20°C, avoiding freeze/thaw cycles.

NOTE

For Research Use Only. Not for diagnostic, therapeutics, prophylactic or in vivo use.