

DATASHEET

HACE1 Rabbit Polyclonal Antibody

CAT. NO. APA15792

KEY FEATURES

Target	HACE1	Source / Host	Rabbit
Reactivity	Human, Mouse, Rat	Clonality	Polyclonal
Applications	WB, IHC	Conjugation	Unconjugated
Form / Buffer	Liquid in 0.42% Potassium phosphate, 0.87% Sodium chloride, pH 7.3, 30% glycerol, and 0.01% sodium azide.		Storage at-20°C

BACKGROUND

E3 ubiquitin-protein ligase involved in Golgi membrane fusion and regulation of small GTPases . Acts as a regulator of Golgi membrane dynamics during the cell cycle: recruited to Golgi membrane by Rab proteins and regulates postmitotic Golgi membrane fusion . Acts by mediating ubiquitination during mitotic Golgi disassembly, ubiquitination serving as a signal for Golgi reassembly later, after cell division . Specifically binds GTP-bound RAC1, mediating ubiquitination and subsequent degradation of active RAC1, thereby playing a role in host defense against pathogens . May also act as a transcription regulator via its interaction with RARB .

APPLICATION

To ensure optimal assay performance, AREX recommends conducting reagent titration tailored to each testing system for optimal detection results.

WB	1:500 - 1:2000
IHC	1:50 - 1:200

*Results are sample-specific. Please refer to your local assay conditions and test parameters for reference.

PRODUCT OVERVIEW

Description	Rabbit polyclonal antibody to HACE1
Specificity	Recognizes endogenous levels of HACE1 protein
Antibody Type	Primary antibody
Immunogen	KLH-conjugated synthetic peptide of human HACE1. The exact sequence is proprietary.
Purification	The antibody was purified by immunogen affinity chromatography.
Molecular Weight	Predicted: 35; Observed: 102 kD
Form/Buffer	Liquid in 0.42% Potassium phosphate, 0.87% Sodium chloride, pH 7.3, 30% glycerol, and 0.01% sodium azide.
Alternative Names	KIAA1320; E3 ubiquitin-protein ligase HACE1; HECT domain and ankyrin repeat-containing E3 ubiquitin-protein ligase 1
Gene Symbol	HACE1
Entrez Gene	57531(Human); 209462(Mouse); 361866(Rat)
SwissProt	Q8IYU2(Human); Q3U0D9(Mouse); D3ZBM7(Rat)

*AREX continuously optimizes our products. Webpage content may not reflect the latest updates. For inquiries, please contact info@arexbio.com or your local distributor.

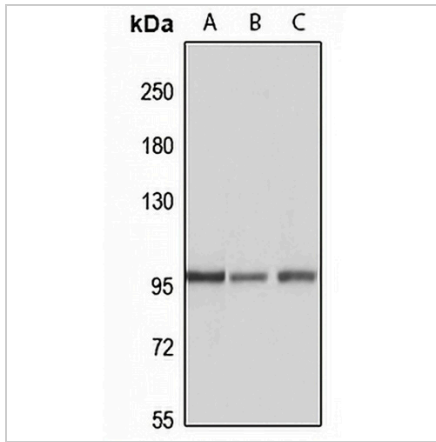
*Clone Number, Reactivity, Source/Host and Clonality can be found in the product name and Key Features section above.

DATASHEET

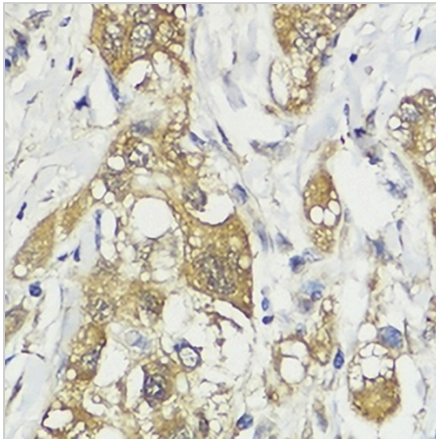
HACE1 Rabbit Polyclonal Antibody

CAT. NO. APA15792

DATA



Western blot analysis of HACE1 expression in HeLa (A), mouse lung (B), mouse spleen (C) whole cell lysates. (Predicted band size: 35; 63; 77; 102 kD; Observed band size: 102 kD)



Immunohistochemical analysis of HACE1 staining in human liver cancer formalin fixed paraffin embedded tissue section. The section was pre-treated using heat mediated antigen retrieval with sodium citrate buffer (pH 6.0). The section was then incubated with the antibody at room temperature and detected using an HRP conjugated compact polymer system. DAB was used as the chromogen. The section was then counterstained with haematoxylin and mounted with DPX.

STORAGE

Store at 4°C short term. For long term storage, store at -20°C, avoiding freeze/thaw cycles.

NOTE

For Research Use Only. Not for diagnostic, therapeutics, prophylactic or in vivo use.