

DATASHEET

HAS2 Rabbit Polyclonal Antibody

CAT. NO. APA15796

KEY FEATURES

Target	HAS2	Source / Host	Rabbit
Reactivity	Mouse, Rat	Clonality	Polyclonal
Applications	WB	Conjugation	Unconjugated
Form / Buffer	Liquid in 0.42% Potassium phosphate, 0.87% Sodium chloride, pH 7.3, 30% glycerol, and 0.01% sodium azide.		Storage at -20°C

BACKGROUND

Catalyzes the addition of GlcNAc or GlcUA monosaccharides to the nascent hyaluronan polymer (Probable) . Therefore, it is essential to hyaluronan synthesis a major component of most extracellular matrices that has a structural role in tissues architectures and regulates cell adhesion, migration and differentiation . This is one of three isoenzymes responsible for cellular hyaluronan synthesis and it is particularly responsible for the synthesis of high molecular mass hyaluronan .

APPLICATION

To ensure optimal assay performance, AREX recommends conducting reagent titration tailored to each testing system for optimal detection results.

WB	1:500 - 1:2000
----	----------------

*Results are sample-specific. Please refer to your local assay conditions and test parameters for reference.

PRODUCT OVERVIEW

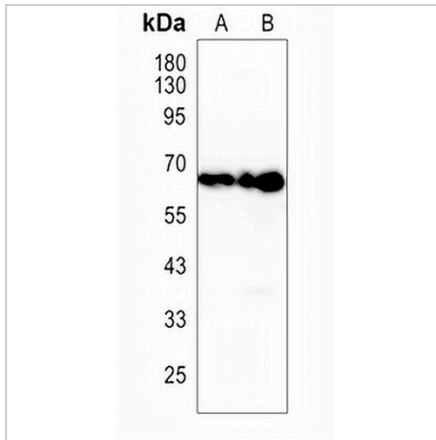
Description	Rabbit polyclonal antibody to HAS2
Specificity	Recognizes endogenous levels of HAS2 protein
Antibody Type	Primary antibody
Immunogen	Recombinant fusion protein of human HAS2. The exact sequence is proprietary.
Purification	The antibody was purified by immunogen affinity chromatography.
Molecular Weight	Predicted: 63 kD; Observed: 64 kD
Form/Buffer	Liquid in 0.42% Potassium phosphate, 0.87% Sodium chloride, pH 7.3, 30% glycerol, and 0.01% sodium azide.
Alternative Names	Hyaluronan synthase 2; Hyaluronate synthase 2; Hyaluronic acid synthase 2; HA synthase 2
Gene Symbol	HAS2
Entrez Gene	3037(Human); 15117(Mouse)
SwissProt	Q92819(Human); P70312(Mouse)

*AREX continuously optimizes our products. Webpage content may not reflect the latest updates. For inquiries, please contact info@arexbio.com or your local distributor.

*Clone Number, Reactivity, Source/Host and Clonality can be found in the product name and Key Features section above.

DATASHEET**HAS2 Rabbit Polyclonal Antibody**

CAT. NO. APA15796

DATA

Western blot analysis of HAS2 expression in mouse brain (A), rat brain (B) whole cell lysates. (Predicted band size: 63 kD; Observed band size: 64 kD)

STORAGE

Store at 4°C short term. For long term storage, store at -20°C, avoiding freeze/thaw cycles.

NOTE

For Research Use Only. Not for diagnostic, therapeutics, prophylactic or in vivo use.