

DATASHEET

HEI-C Rabbit Polyclonal Antibody

CAT. NO. APA15797

KEY FEATURES

Target	HEI-C	Source / Host	Rabbit
Reactivity	Human, Mouse, Rat	Clonality	Polyclonal
Applications	WB	Conjugation	Unconjugated
Form / Buffer	Liquid in 0.42% Potassium phosphate, 0.87% Sodium chloride, pH 7.3, 30% glycerol, and 0.01% sodium azide.		Storage at -20°C

BACKGROUND

Contributes to mitotic spindle assembly, maintenance of centrosome integrity and completion of cytokinesis as part of the HAUS augmin-like complex.

APPLICATION

To ensure optimal assay performance, AREX recommends conducting reagent titration tailored to each testing system for optimal detection results.

WB	1:500 - 1:2000
----	----------------

*Results are sample-specific. Please refer to your local assay conditions and test parameters for reference.

PRODUCT OVERVIEW

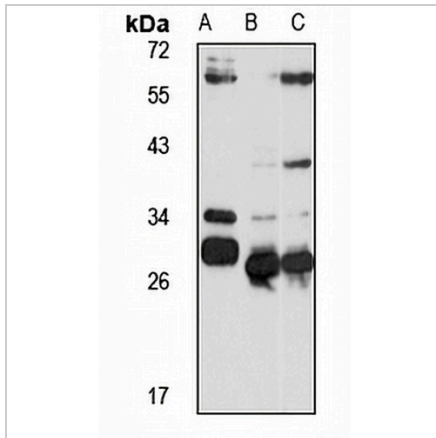
Description	Rabbit polyclonal antibody to HEI-C
Specificity	Recognizes endogenous levels of HEI-C protein
Antibody Type	Primary antibody
Immunogen	Recombinant fusion protein of human HEI-C. The exact sequence is proprietary.
Purification	The antibody was purified by immunogen affinity chromatography.
Molecular Weight	Predicted: 32 kD; Observed: 32 kD
Form/Buffer	Liquid in 0.42% Potassium phosphate, 0.87% Sodium chloride, pH 7.3, 30% glycerol, and 0.01% sodium azide.
Alternative Names	CCDC5; HEIC; HAUS augmin-like complex subunit 1; Coiled-coil domain-containing protein 5; Enhancer of invasion-cluster; HEI-C
Gene Symbol	HAUS1
Entrez Gene	115106(Human); 225745(Mouse); 100912125; 192228(Rat)
SwissProt	Q96CS2(Human); Q8BHX1(Mouse); Q9R0A8(Rat)

*AREX continuously optimizes our products. Webpage content may not reflect the latest updates. For inquiries, please contact info@arexbio.com or your local distributor.

*Clone Number, Reactivity, Source/Host and Clonality can be found in the product name and Key Features section above.

DATASHEET**HEI-C Rabbit Polyclonal Antibody**

CAT. NO. APA15797

DATA

Western blot analysis of HEI-C expression in HeLa (A), mouse testis (B), rat testis (C) whole cell lysates. (Predicted band size: 32 kD; Observed band size: 32 kD)

STORAGE

Store at 4°C short term. For long term storage, store at -20°C, avoiding freeze/thaw cycles.

NOTE

For Research Use Only. Not for diagnostic, therapeutics, prophylactic or in vivo use.