

DATASHEET

CEP27 Rabbit Polyclonal Antibody

CAT. NO. APA15798

KEY FEATURES

Target	CEP27	Source / Host	Rabbit
Reactivity	Human, Mouse, Rat	Clonality	Polyclonal
Applications	WB	Conjugation	Unconjugated
Form / Buffer	Liquid in 0.42% Potassium phosphate, 0.87% Sodium chloride, pH 7.3, 30% glycerol, and 0.01% sodium azide.		Storage at -20°C

BACKGROUND

Contributes to mitotic spindle assembly, maintenance of centrosome integrity and completion of cytokinesis as part of the HAUS augmin-like complex.

APPLICATION

To ensure optimal assay performance, AREX recommends conducting reagent titration tailored to each testing system for optimal detection results.

WB	1:500 - 1:2000
----	----------------

*Results are sample-specific. Please refer to your local assay conditions and test parameters for reference.

PRODUCT OVERVIEW

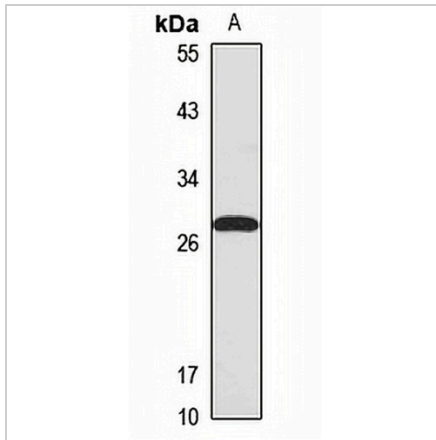
Description	Rabbit polyclonal antibody to CEP27
Specificity	Recognizes endogenous levels of CEP27 protein
Antibody Type	Primary antibody
Immunogen	Recombinant fusion protein of human CEP27. The exact sequence is proprietary.
Purification	The antibody was purified by immunogen affinity chromatography.
Molecular Weight	Predicted: 16; Observed: 27 kD
Form/Buffer	Liquid in 0.42% Potassium phosphate, 0.87% Sodium chloride, pH 7.3, 30% glycerol, and 0.01% sodium azide.
Alternative Names	C15orf25; CEP27; HAUS augmin-like complex subunit 2; Centrosomal protein of 27 kDa; Cep27
Gene Symbol	HAUS2
Entrez Gene	55142(Human); 66296(Mouse)
SwissProt	Q9NVX0(Human); Q9CQS9(Mouse)

*AREX continuously optimizes our products. Webpage content may not reflect the latest updates. For inquiries, please contact info@arexbio.com or your local distributor.

*Clone Number, Reactivity, Source/Host and Clonality can be found in the product name and Key Features section above.

DATASHEET**CEP27 Rabbit Polyclonal Antibody**

CAT. NO. APA15798

DATA

Western blot analysis of CEP27 expression in HEK293T (A) whole cell lysates. (Predicted band size: 16; 23; 26 kD; Observed band size: 27 kD)

STORAGE

Store at 4°C short term. For long term storage, store at -20°C, avoiding freeze/thaw cycles.

NOTE

For Research Use Only. Not for diagnostic, therapeutics, prophylactic or in vivo use.