

DATASHEET

Hemoglobin beta Rabbit Polyclonal Antibody

CAT. NO. APA15801

KEY FEATURES

Target	Hemoglobin beta	Source / Host	Rabbit
Reactivity	Human, Mouse, Rat	Clonality	Polyclonal
Applications	WB	Conjugation	Unconjugated
Form / Buffer	Liquid in 0.42% Potassium phosphate, 0.87% Sodium chloride, pH 7.3, 30% glycerol, and 0.01% sodium azide.		Storage at -20°C

BACKGROUND

Involved in oxygen transport from the lung to the various peripheral tissues.

APPLICATION

To ensure optimal assay performance, AREX recommends conducting reagent titration tailored to each testing system for optimal detection results.

WB	1:500 - 1:2000
----	----------------

*Results are sample-specific. Please refer to your local assay conditions and test parameters for reference.

PRODUCT OVERVIEW

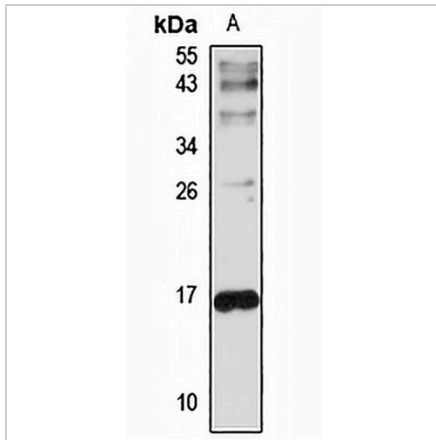
Description	Rabbit polyclonal antibody to Hemoglobin beta
Specificity	Recognizes endogenous levels of Hemoglobin beta protein
Antibody Type	Primary antibody
Immunogen	Recombinant fusion protein of human Hemoglobin beta. The exact sequence is proprietary.
Purification	The antibody was purified by immunogen affinity chromatography.
Molecular Weight	Predicted: 15 kD; Observed: 16 kD
Form/Buffer	Liquid in 0.42% Potassium phosphate, 0.87% Sodium chloride, pH 7.3, 30% glycerol, and 0.01% sodium azide.
Alternative Names	Hemoglobin subunit beta; Beta-globin; Hemoglobin beta chain
Gene Symbol	HBB
Entrez Gene	3043(Human)
SwissProt	P68871(Human)

*AREX continuously optimizes our products. Webpage content may not reflect the latest updates. For inquiries, please contact info@arexbio.com or your local distributor.

*Clone Number, Reactivity, Source/Host and Clonality can be found in the product name and Key Features section above.

DATASHEET**Hemoglobin beta Rabbit Polyclonal Antibody**

CAT. NO. APA15801

DATA

Western blot analysis of Hemoglobin beta expression in Raji (A) whole cell lysates.
(Predicted band size: 15 kD; Observed band size: 16 kD)

STORAGE

Store at 4°C short term. For long term storage, store at -20°C, avoiding freeze/thaw cycles.

NOTE

For Research Use Only. Not for diagnostic, therapeutics, prophylactic or in vivo use.