

DATASHEET

Orexin Receptor 2 Rabbit Polyclonal Antibody

CAT. NO. APA15805

KEY FEATURES

Target	Orexin Receptor 2	Source / Host	Rabbit
Reactivity	Human, Mouse	Clonality	Polyclonal
Applications	WB	Conjugation	Unconjugated
Form / Buffer	Liquid in 0.42% Potassium phosphate, 0.87% Sodium chloride, pH 7.3, 30% glycerol, and 0.01% sodium azide.		Storage at -20°C

BACKGROUND

G-protein coupled receptor that binds neuropeptides orexin-A and orexin-B, two neuropeptides derived from a common precursor, prepro-orexin . Upon neuropeptide ligand binding, HCRTR2 can couple with both G(q)/11 and G(i)/o heterotrimeric G-proteins thereby initiating distinct downstream signaling cascades . Involved in regulating the sleep-wake cycle . Contributes to central regulation of glucose homeostasis .

APPLICATION

To ensure optimal assay performance, AREX recommends conducting reagent titration tailored to each testing system for optimal detection results.

WB	1:500 - 1:2000
----	----------------

*Results are sample-specific. Please refer to your local assay conditions and test parameters for reference.

PRODUCT OVERVIEW

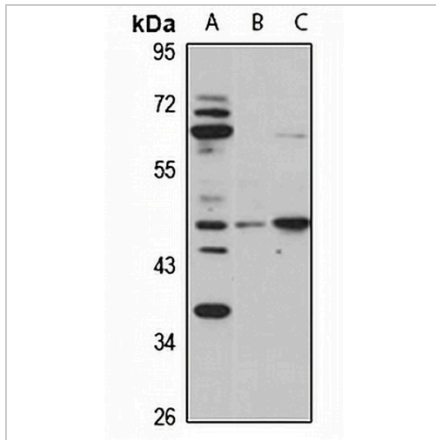
Description	Rabbit polyclonal antibody to Orexin Receptor 2
Specificity	Recognizes endogenous levels of Orexin Receptor 2 protein
Antibody Type	Primary antibody
Immunogen	Recombinant fusion protein of human Orexin Receptor 2. The exact sequence is proprietary.
Purification	The antibody was purified by immunogen affinity chromatography.
Molecular Weight	Predicted: 50 kD; Observed: 50 kD
Form/Buffer	Liquid in 0.42% Potassium phosphate, 0.87% Sodium chloride, pH 7.3, 30% glycerol, and 0.01% sodium azide.
Alternative Names	Orexin receptor type 2; Ox-2-R; Ox2-R; Ox2R; Hypocretin receptor type 2
Gene Symbol	HCRTR2
Entrez Gene	3062(Human); 387285(Mouse)
SwissProt	O43614(Human); P58308(Mouse)

*AREX continuously optimizes our products. Webpage content may not reflect the latest updates. For inquiries, please contact info@arexbio.com or your local distributor.

*Clone Number, Reactivity, Source/Host and Clonality can be found in the product name and Key Features section above.

DATASHEET**Orexin Receptor 2 Rabbit Polyclonal Antibody**

CAT. NO. APA15805

DATA

Western blot analysis of Orexin Receptor 2 expression in HEK293T (A), mouse brain (B), mouse heart (C) whole cell lysates. (Predicted band size: 50 kD; Observed band size: 50 kD)

STORAGE

Store at 4°C short term. For long term storage, store at -20°C, avoiding freeze/thaw cycles.

NOTE

For Research Use Only. Not for diagnostic, therapeutics, prophylactic or in vivo use.