

**DATASHEET**

**HEL308 Rabbit Polyclonal Antibody**

CAT. NO. APA15809

**KEY FEATURES**

Target	HEL308	Source / Host	Rabbit
Reactivity	Human, Mouse	Clonality	Polyclonal
Applications	WB, IHC	Conjugation	Unconjugated
Form / Buffer	Liquid in 0.42% Potassium phosphate, 0.87% Sodium chloride, pH 7.3, 30% glycerol, and 0.01% sodium azide.		Storage at -20°C

**BACKGROUND**

Single-stranded 3'-5' DNA helicase that plays a key role in homology-driven double-strand break (DSB) repair. Involved in different DSB repair mechanisms that are guided by annealing of extensive stretches of complementary bases at break ends, such as microhomology-mediated end-joining (MMEJ), single-strand annealing (SSA) or synthesis-dependent strand annealing (SDSA). Possesses both DNA unwinding and annealing activities. Forms a complex with RAD51, stimulating HELQ DNA helicase activity and ability to unwind DNA. Efficiently unwinds substrates containing 3' overhangs or a D-loop. In contrast, interaction with the replication protein A (RPA/RP-A) complex inhibits DNA unwinding by HELQ but strongly stimulates DNA strand annealing.

**APPLICATION**

To ensure optimal assay performance, AREX recommends conducting reagent titration tailored to each testing system for optimal detection results.

WB	1:500 - 1:2000
IHC	1:50 - 1:200

\*Results are sample-specific. Please refer to your local assay conditions and test parameters for reference.

**PRODUCT OVERVIEW**

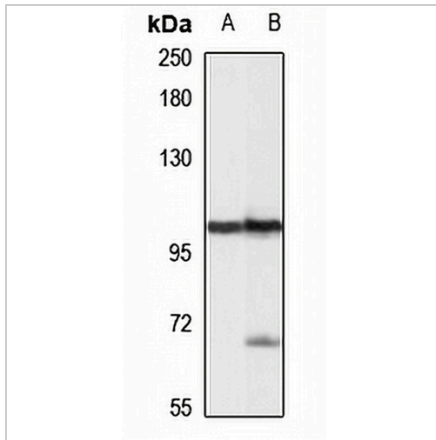
Description	Rabbit polyclonal antibody to HEL308
Specificity	Recognizes endogenous levels of HEL308 protein
Antibody Type	Primary antibody
Immunogen	Recombinant fusion protein of human HEL308. The exact sequence is proprietary.
Purification	The antibody was purified by immunogen affinity chromatography.
Molecular Weight	Predicted: 15; Observed: 105 kD
Form/Buffer	Liquid in 0.42% Potassium phosphate, 0.87% Sodium chloride, pH 7.3, 30% glycerol, and 0.01% sodium azide.
Alternative Names	HEL308; Helicase POLQ-like; Mus308-like helicase; POLQ-like helicase
Gene Symbol	HELQ
Entrez Gene	113510(Human); 191578(Mouse)
SwissProt	Q8TDG4(Human); Q2VPA6(Mouse)

\*AREX continuously optimizes our products. Webpage content may not reflect the latest updates. For inquiries, please contact [info@arexbio.com](mailto:info@arexbio.com) or your local distributor.

\*Clone Number, Reactivity, Source/Host and Clonality can be found in the product name and Key Features section above.

**DATASHEET****HEL308 Rabbit Polyclonal Antibody**

CAT. NO. APA15809

**DATA**

Western blot analysis of HEL308 expression in HeLa (A), mouse testis (B) whole cell lysates. (Predicted band size: 15; 28; 35; 124 kD; Observed band size: 105 kD)

**STORAGE**

Store at 4°C short term. For long term storage, store at -20°C, avoiding freeze/thaw cycles.

**NOTE**

For Research Use Only. Not for diagnostic, therapeutics, prophylactic or in vivo use.