

DATASHEET

HERC5 Rabbit Polyclonal Antibody

CAT. NO. APA15812

KEY FEATURES

Target	HERC5	Source / Host	Rabbit
Reactivity	Human, Mouse, Rat	Clonality	Polyclonal
Applications	WB	Conjugation	Unconjugated
Form / Buffer	Liquid in 0.42% Potassium phosphate, 0.87% Sodium chloride, pH 7.3, 30% glycerol, and 0.01% sodium azide.		Storage at-20°C

BACKGROUND

Major E3 ligase for ISG15 conjugation . Acts as a positive regulator of innate antiviral response in cells induced by interferon. Functions as part of the ISGylation machinery that recognizes target proteins in a broad and relatively non-specific manner. Catalyzes ISGylation of IRF3 which results in sustained activation, it attenuates IRF3-PIN1 interaction, which antagonizes IRF3 ubiquitination and degradation, and boosts the antiviral response. Mediates ISGylation of the phosphatase PTEN leading to its degradation, thus alleviating its suppression of the PI3K-AKT signaling pathway and promoting the production of cytokines that facilitate bacterial clearance . Interferes with the function of key viral structural proteins such as ebolavirus structural protein VP40 or HIV-1 protein GAG .

APPLICATION

To ensure optimal assay performance, AREX recommends conducting reagent titration tailored to each testing system for optimal detection results.

WB	1:500 - 1:2000
----	----------------

*Results are sample-specific. Please refer to your local assay conditions and test parameters for reference.

PRODUCT OVERVIEW

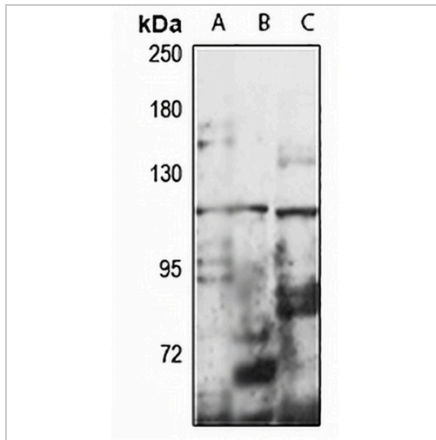
Description	Rabbit polyclonal antibody to HERC5
Specificity	Recognizes endogenous levels of HERC5 protein
Antibody Type	Primary antibody
Immunogen	Recombinant fusion protein of human HERC5. The exact sequence is proprietary.
Purification	The antibody was purified by immunogen affinity chromatography.
Molecular Weight	Predicted: 116 kD; Observed: 117 kD
Form/Buffer	Liquid in 0.42% Potassium phosphate, 0.87% Sodium chloride, pH 7.3, 30% glycerol, and 0.01% sodium azide.
Alternative Names	CEB1; CEBP1; E3 ISG15--protein ligase HERC5; Cyclin-E-binding protein 1; HECT domain and RCC1-like domain-containing protein 5
Gene Symbol	HERC5
Entrez Gene	51191(Human)
SwissProt	Q9UII4(Human)

*AREX continuously optimizes our products. Webpage content may not reflect the latest updates. For inquiries, please contact info@arexbio.com or your local distributor.

*Clone Number, Reactivity, Source/Host and Clonality can be found in the product name and Key Features section above.

DATASHEET**HERC5 Rabbit Polyclonal Antibody**

CAT. NO. APA15812

DATA

Western blot analysis of HERC5 expression in OVCAR3 (A), mouse kidney (B), rat testis (C) whole cell lysates. (Predicted band size: 116 kD; Observed band size: 117 kD)

STORAGE

Store at 4°C short term. For long term storage, store at -20°C, avoiding freeze/thaw cycles.

NOTE

For Research Use Only. Not for diagnostic, therapeutics, prophylactic or in vivo use.