

DATASHEET

HES-1 Rabbit Polyclonal Antibody

CAT. NO. APA15813

KEY FEATURES

Target	HES-1	Source / Host	Rabbit
Reactivity	Human, Mouse, Rat	Clonality	Polyclonal
Applications	WB	Conjugation	Unconjugated
Form / Buffer	Liquid in 0.42% Potassium phosphate, 0.87% Sodium chloride, pH 7.3, 30% glycerol, and 0.01% sodium azide.		Storage at -20°C

BACKGROUND

Transcriptional repressor of genes that require a bHLH protein for their transcription. May act as a negative regulator of myogenesis by inhibiting the functions of MYOD1 and ASH1. Binds DNA on N-box motifs: 5'-CACNAG-3' with high affinity and on E-box motifs: 5'-CANNTG-3' with low affinity. May play a role in a functional FA core complex response to DNA cross-link damage, being required for the stability and nuclear localization of FA core complex proteins, as well as for FANCD2 monoubiquitination in response to DNA damage.

APPLICATION

To ensure optimal assay performance, AREX recommends conducting reagent titration tailored to each testing system for optimal detection results.

WB	1:500 - 1:2000
----	----------------

*Results are sample-specific. Please refer to your local assay conditions and test parameters for reference.

PRODUCT OVERVIEW

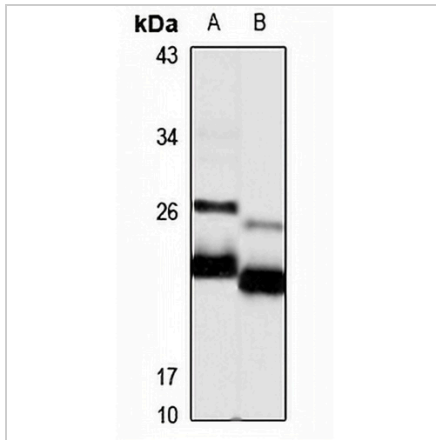
Description	Rabbit polyclonal antibody to HES-1
Specificity	Recognizes endogenous levels of HES-1 protein
Antibody Type	Primary antibody
Immunogen	Recombinant fusion protein of human HES-1. The exact sequence is proprietary.
Purification	The antibody was purified by immunogen affinity chromatography.
Molecular Weight	Predicted: 29 kD; Observed: 25 kD
Form/Buffer	Liquid in 0.42% Potassium phosphate, 0.87% Sodium chloride, pH 7.3, 30% glycerol, and 0.01% sodium azide.
Alternative Names	BHLHB39; HL; HRY; Transcription factor HES-1; Class B basic helix-loop-helix protein 39; bHLHb39; Hairy and enhancer of split 1; Hairy homolog; Hairy-like protein; hHL
Gene Symbol	HES1
Entrez Gene	3280(Human); 15205(Mouse); 29577(Rat)
SwissProt	Q14469(Human); P35428(Mouse); Q04666(Rat)

*AREX continuously optimizes our products. Webpage content may not reflect the latest updates. For inquiries, please contact info@arexbio.com or your local distributor.

*Clone Number, Reactivity, Source/Host and Clonality can be found in the product name and Key Features section above.

DATASHEET**HES-1 Rabbit Polyclonal Antibody**

CAT. NO. APA15813

DATA

Western blot analysis of HES-1 expression in SHSY5Y (A), mouse intestine (B) whole cell lysates. (Predicted band size: 29 kD; Observed band size: 25 kD)

STORAGE

Store at 4°C short term. For long term storage, store at -20°C, avoiding freeze/thaw cycles.

NOTE

For Research Use Only. Not for diagnostic, therapeutics, prophylactic or in vivo use.