

## DATASHEET

# HHAT Rabbit Polyclonal Antibody

CAT. NO. APA15817

### KEY FEATURES

Target	HHAT	Source / Host	Rabbit
Reactivity	Human, Mouse, Rat	Clonality	Polyclonal
Applications	WB	Conjugation	Unconjugated
Form / Buffer	Liquid in 0.42% Potassium phosphate, 0.87% Sodium chloride, pH 7.3, 30% glycerol, and 0.01% sodium azide.		Storage at -20°C

### BACKGROUND

Palmitoyl acyltransferase that catalyzes N-terminal palmitoylation of SHH; which is required for SHH signaling . It also catalyzes N-terminal palmitoylation of DHH . Promotes the transfer of palmitoyl-CoA from the cytoplasmic to the luminal side of the endoplasmic reticulum membrane, where SHH palmitoylation occurs . It is an essential factor for proper embryonic development and testicular organogenesis .

### APPLICATION

To ensure optimal assay performance, AREX recommends conducting reagent titration tailored to each testing system for optimal detection results.

WB	1:500 - 1:2000
----	----------------

\*Results are sample-specific. Please refer to your local assay conditions and test parameters for reference.

### PRODUCT OVERVIEW

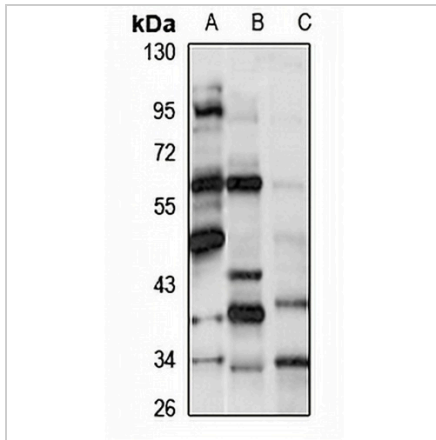
Description	Rabbit polyclonal antibody to HHAT
Specificity	Recognizes endogenous levels of HHAT protein
Antibody Type	Primary antibody
Immunogen	KLH-conjugated synthetic peptide of human HHAT. The exact sequence is proprietary.
Purification	The antibody was purified by immunogen affinity chromatography.
Molecular Weight	Predicted: 9; Observed: 63 kD
Form/Buffer	Liquid in 0.42% Potassium phosphate, 0.87% Sodium chloride, pH 7.3, 30% glycerol, and 0.01% sodium azide.
Alternative Names	MART2; SKI1; Protein-cysteine N-palmitoyltransferase HHAT; Hedgehog acyltransferase; Melanoma antigen recognized by T-cells 2; MART-2; Skinny hedgehog protein 1
Gene Symbol	HHAT
Entrez Gene	55733(Human); 226861(Mouse)
SwissProt	Q5VTY9(Human); Q8BMT9(Mouse)

\*AREX continuously optimizes our products. Webpage content may not reflect the latest updates. For inquiries, please contact [info@arexbio.com](mailto:info@arexbio.com) or your local distributor.

\*Clone Number, Reactivity, Source/Host and Clonality can be found in the product name and Key Features section above.

**DATASHEET****HHAT Rabbit Polyclonal Antibody**

CAT. NO. APA15817

**DATA**

Western blot analysis of HHAT expression in K562 (A), mouse brain (B), rat spleen (C) whole cell lysates. (Predicted band size: 9; 41; 49; 52; 56; 57; 60 kD; Observed band size: 63 kD)

**STORAGE**

Store at 4°C short term. For long term storage, store at -20°C, avoiding freeze/thaw cycles.

**NOTE**

For Research Use Only. Not for diagnostic, therapeutics, prophylactic or in vivo use.