

## DATASHEET

# HIC-1 Rabbit Polyclonal Antibody

CAT. NO. APA15820

### KEY FEATURES

Target	HIC-1	Source / Host	Rabbit
Reactivity	Human, Rat	Clonality	Polyclonal
Applications	WB	Conjugation	Unconjugated
Form / Buffer	Liquid in 0.42% Potassium phosphate, 0.87% Sodium chloride, pH 7.3, 30% glycerol, and 0.01% sodium azide.		Storage at-20°C

### BACKGROUND

Transcriptional repressor . Recognizes and binds to the consensus sequence '5-[CG]NG[CG]GGGCA[CA]CC-3' . May act as a tumor suppressor . Involved in development of head, face, limbs and ventral body wall . Involved in down-regulation of SIRT1 and thereby is involved in regulation of p53/TP53-dependent apoptotic DNA-damage responses . The specific target gene promoter association seems to be depend on corepressors, such as CTBP1 or CTBP2 and MTA1 . In cooperation with MTA1 (indicative for an association with the NuRD complex) represses transcription from CCND1/cyclin-D1 and CDKN1C/p57Kip2 specifically in quiescent cells .

### APPLICATION

To ensure optimal assay performance, AREX recommends conducting reagent titration tailored to each testing system for optimal detection results.

WB	1:500 - 1:1000
----	----------------

\*Results are sample-specific. Please refer to your local assay conditions and test parameters for reference.

### PRODUCT OVERVIEW

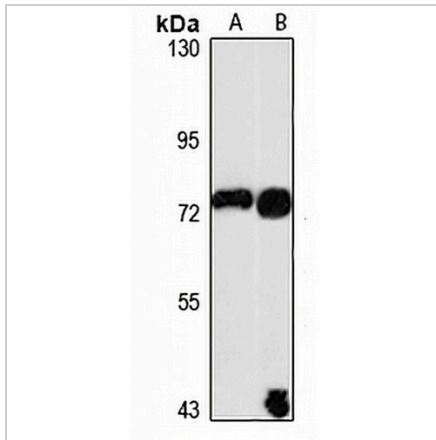
Description	Rabbit polyclonal antibody to HIC-1
Specificity	Recognizes endogenous levels of HIC-1 protein
Antibody Type	Primary antibody
Immunogen	Recombinant fusion protein of human HIC-1. The exact sequence is proprietary.
Purification	The antibody was purified by immunogen affinity chromatography.
Molecular Weight	Predicted: 74; Observed: 76 kD
Form/Buffer	Liquid in 0.42% Potassium phosphate, 0.87% Sodium chloride, pH 7.3, 30% glycerol, and 0.01% sodium azide.
Alternative Names	ZBTB29; Hypermethylated in cancer 1 protein; Hic-1; Zinc finger and BTB domain-containing protein 29
Gene Symbol	HIC1
Entrez Gene	3090(Human)
SwissProt	Q14526(Human)

\*AREX continuously optimizes our products. Webpage content may not reflect the latest updates. For inquiries, please contact [info@arexbio.com](mailto:info@arexbio.com) or your local distributor.

\*Clone Number, Reactivity, Source/Host and Clonality can be found in the product name and Key Features section above.

**DATASHEET****HIC-1 Rabbit Polyclonal Antibody**

CAT. NO. APA15820

**DATA****STORAGE**

Store at 4°C short term. For long term storage, store at -20°C, avoiding freeze/thaw cycles.

**NOTE**

For Research Use Only. Not for diagnostic, therapeutics, prophylactic or in vivo use.