

DATASHEET

HKDC1 Rabbit Polyclonal Antibody

CAT. NO. APA15822

KEY FEATURES

Target	HKDC1	Source / Host	Rabbit
Reactivity	Human, Mouse	Clonality	Polyclonal
Applications	WB	Conjugation	Unconjugated
Form / Buffer	Liquid in 0.42% Potassium phosphate, 0.87% Sodium chloride, pH 7.3, 30% glycerol, and 0.01% sodium azide.		Storage at -20°C

BACKGROUND

Catalyzes the phosphorylation of hexose to hexose 6-phosphate, although at very low level compared to other hexokinases . Has low glucose phosphorylating activity compared to other hexokinases . Involved in glucose homeostasis and hepatic lipid accumulation. Required to maintain whole-body glucose homeostasis during pregnancy; however additional evidences are required to confirm this role .

APPLICATION

To ensure optimal assay performance, AREX recommends conducting reagent titration tailored to each testing system for optimal detection results.

WB	1:500 - 1:2000
----	----------------

*Results are sample-specific. Please refer to your local assay conditions and test parameters for reference.

PRODUCT OVERVIEW

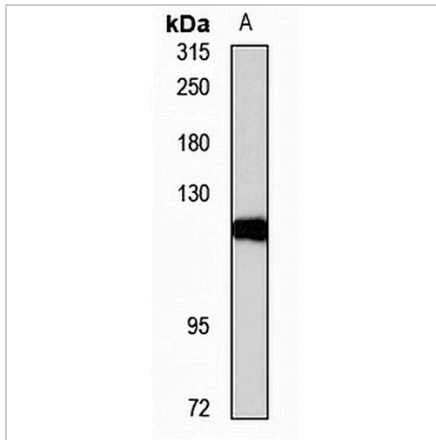
Description	Rabbit polyclonal antibody to HKDC1
Specificity	Recognizes endogenous levels of HKDC1 protein
Antibody Type	Primary antibody
Immunogen	KLH-conjugated synthetic peptide of human HKDC1. The exact sequence is proprietary.
Purification	The antibody was purified by immunogen affinity chromatography.
Molecular Weight	Predicted: 82; Observed: 120 kD
Form/Buffer	Liquid in 0.42% Potassium phosphate, 0.87% Sodium chloride, pH 7.3, 30% glycerol, and 0.01% sodium azide.
Alternative Names	Putative hexokinase HKDC1; Hexokinase domain-containing protein 1
Gene Symbol	HKDC1
Entrez Gene	80201(Human); 216019(Mouse)
SwissProt	Q2TB90(Human); Q91W97(Mouse)

*AREX continuously optimizes our products. Webpage content may not reflect the latest updates. For inquiries, please contact info@arexbio.com or your local distributor.

*Clone Number, Reactivity, Source/Host and Clonality can be found in the product name and Key Features section above.

DATASHEET**HKDC1 Rabbit Polyclonal Antibody**

CAT. NO. APA15822

DATA

Western blot analysis of HKDC1 expression in A549 (A) whole cell lysates. (Predicted band size: 82; 90; 102 kD; Observed band size: 120 kD)

STORAGE

Store at 4°C short term. For long term storage, store at -20°C, avoiding freeze/thaw cycles.

NOTE

For Research Use Only. Not for diagnostic, therapeutics, prophylactic or in vivo use.