

**DATASHEET**

**HoxC4 Rabbit Polyclonal Antibody**

CAT. NO. APA15848

**KEY FEATURES**

Target	HoxC4	Source / Host	Rabbit
Reactivity	Human, Mouse, Rat	Clonality	Polyclonal
Applications	WB	Conjugation	Unconjugated
Form / Buffer	Liquid in 0.42% Potassium phosphate, 0.87% Sodium chloride, pH 7.3, 30% glycerol, and 0.01% sodium azide.		Storage at -20°C

**BACKGROUND**

Sequence-specific transcription factor which is part of a developmental regulatory system that provides cells with specific positional identities on the anterior-posterior axis.

**APPLICATION**

To ensure optimal assay performance, AREX recommends conducting reagent titration tailored to each testing system for optimal detection results.

WB	1:500 - 1:2000
----	----------------

\*Results are sample-specific. Please refer to your local assay conditions and test parameters for reference.

**PRODUCT OVERVIEW**

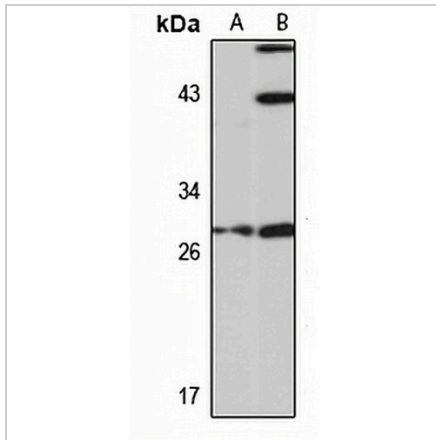
Description	Rabbit polyclonal antibody to HoxC4
Specificity	Recognizes endogenous levels of HoxC4 protein
Antibody Type	Primary antibody
Immunogen	Recombinant fusion protein of human HoxC4. The exact sequence is proprietary.
Purification	The antibody was purified by immunogen affinity chromatography.
Molecular Weight	Predicted: 29 kD; Observed: 30 kD
Form/Buffer	Liquid in 0.42% Potassium phosphate, 0.87% Sodium chloride, pH 7.3, 30% glycerol, and 0.01% sodium azide.
Alternative Names	HOX3E; Homeobox protein Hox-C4; Homeobox protein CP19; Homeobox protein Hox-3E
Gene Symbol	HOXC4
Entrez Gene	3221(Human); 15423(Mouse)
SwissProt	P09017(Human); Q08624(Mouse); P18865(Rat)

\*AREX continuously optimizes our products. Webpage content may not reflect the latest updates. For inquiries, please contact [info@arexbio.com](mailto:info@arexbio.com) or your local distributor.

\*Clone Number, Reactivity, Source/Host and Clonality can be found in the product name and Key Features section above.

**DATASHEET****HoxC4 Rabbit Polyclonal Antibody**

CAT. NO. APA15848

**DATA**

Western blot analysis of HoxC4 expression in HeLa (A), mouse kidney (B) whole cell lysates. (Predicted band size: 29 kD; Observed band size: 30 kD)

**STORAGE**

Store at 4°C short term. For long term storage, store at -20°C, avoiding freeze/thaw cycles.

**NOTE**

For Research Use Only. Not for diagnostic, therapeutics, prophylactic or in vivo use.