

DATASHEET

HSCB Rabbit Polyclonal Antibody

CAT. NO. APA15855

KEY FEATURES

Target	HSCB	Source / Host	Rabbit
Reactivity	Human, Mouse	Clonality	Polyclonal
Applications	WB	Conjugation	Unconjugated
Form / Buffer	Liquid in 0.42% Potassium phosphate, 0.87% Sodium chloride, pH 7.3, 30% glycerol, and 0.01% sodium azide.		Storage at -20°C

BACKGROUND

Acts as a co-chaperone in iron-sulfur cluster assembly in mitochondria . Required for incorporation of iron-sulfur clusters into SDHB, the iron-sulfur protein subunit of succinate dehydrogenase that is involved in complex II of the mitochondrial electron transport chain . Recruited to SDHB by interaction with SDHAF1 which first binds SDHB and then recruits the iron-sulfur transfer complex formed by HSC20, HSPA9 and ISCU through direct binding to HSC20 . Plays an essential role in hematopoiesis .

APPLICATION

To ensure optimal assay performance, AREX recommends conducting reagent titration tailored to each testing system for optimal detection results.

WB	1:500 - 1:2000
----	----------------

*Results are sample-specific. Please refer to your local assay conditions and test parameters for reference.

PRODUCT OVERVIEW

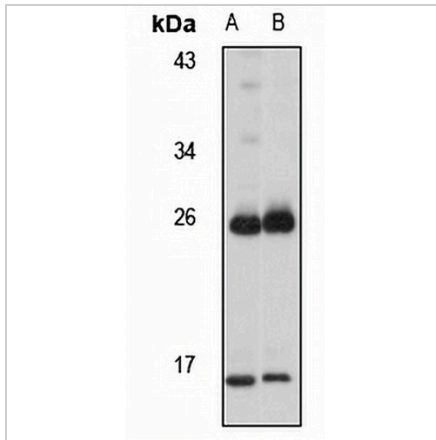
Description	Rabbit polyclonal antibody to HSCB
Specificity	Recognizes endogenous levels of HSCB protein
Antibody Type	Primary antibody
Immunogen	Recombinant fusion protein of human HSCB. The exact sequence is proprietary.
Purification	The antibody was purified by immunogen affinity chromatography.
Molecular Weight	Predicted: 27 kD; Observed: 27 kD
Form/Buffer	Liquid in 0.42% Potassium phosphate, 0.87% Sodium chloride, pH 7.3, 30% glycerol, and 0.01% sodium azide.
Alternative Names	DNAJC20; HSC20; Iron-sulfur cluster co-chaperone protein HscB mitochondrial; DnaJ homolog subfamily C member 20; Hsc20
Gene Symbol	HSCB
Entrez Gene	150274(Human); 100900(Mouse)
SwissProt	Q8IWL3(Human); Q8K3A0(Mouse)

*AREX continuously optimizes our products. Webpage content may not reflect the latest updates. For inquiries, please contact info@arexbio.com or your local distributor.

*Clone Number, Reactivity, Source/Host and Clonality can be found in the product name and Key Features section above.

DATASHEET**HSCB Rabbit Polyclonal Antibody**

CAT. NO. APA15855

DATA

Western blot analysis of HSCB expression in U87MG (A), LO2 (B) whole cell lysates. (Predicted band size: 27 kD; Observed band size: 27 kD)

STORAGE

Store at 4°C short term. For long term storage, store at -20°C, avoiding freeze/thaw cycles.

NOTE

For Research Use Only. Not for diagnostic, therapeutics, prophylactic or in vivo use.