

DATASHEET

HSD17B1 Rabbit Polyclonal Antibody

CAT. NO. APA15857

KEY FEATURES

Target	HSD17B1	Source / Host	Rabbit
Reactivity	Human, Mouse, Rat	Clonality	Polyclonal
Applications	WB, IHC, IF/ICC	Conjugation	Unconjugated
Form / Buffer	Liquid in 0.42% Potassium phosphate, 0.87% Sodium chloride, pH 7.3, 30% glycerol, and 0.01% sodium azide.		Storage at-20°C

BACKGROUND

Favors the reduction of estrogens and androgens. Converts estrone (E1) to a more potent estrogen, 17beta-estradiol (E2) to a more potent estrogen, 17beta-estradiol (E2) . Also has 20-alpha-HSD activity. Uses preferentially NADH.

APPLICATION

To ensure optimal assay performance, AREX recommends conducting reagent titration tailored to each testing system for optimal detection results.

WB	1:500 - 1:2000
IHC	1:50 - 1:200
IF/ICC	1:50 - 1:200

*Results are sample-specific. Please refer to your local assay conditions and test parameters for reference.

PRODUCT OVERVIEW

Description	Rabbit polyclonal antibody to HSD17B1
Specificity	Recognizes endogenous levels of HSD17B1 protein
Antibody Type	Primary antibody
Immunogen	Recombinant fusion protein of human HSD17B1. The exact sequence is proprietary.
Purification	The antibody was purified by immunogen affinity chromatography.
Molecular Weight	Predicted: 34 kD; Observed: 35 kD
Form/Buffer	Liquid in 0.42% Potassium phosphate, 0.87% Sodium chloride, pH 7.3, 30% glycerol, and 0.01% sodium azide.
Alternative Names	E17KSR; EDH17B1; EDH17B2; EDHB17; Estradiol 17-beta-dehydrogenase 1; 17-beta-hydroxysteroid dehydrogenase type 1; 17-beta-HSD 1; 20 alpha-hydroxysteroid dehydrogenase; 20-alpha-HSD; E2DH; Placental 17-beta-hydroxysteroid dehydrogenase
Gene Symbol	HSD17B1
Entrez Gene	3292(Human); 15485(Mouse); 25322(Rat)
SwissProt	P14061(Human); P51656(Mouse); P51657(Rat)

*AREX continuously optimizes our products. Webpage content may not reflect the latest updates. For inquiries, please contact info@arex.bio or your local distributor.

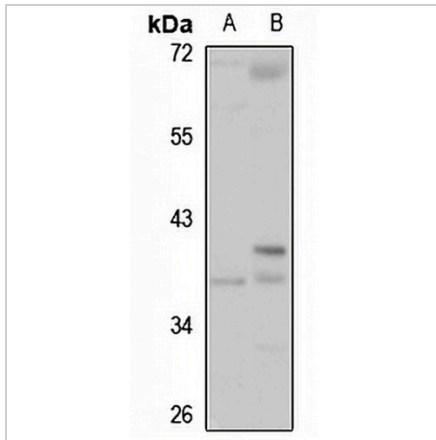
*Clone Number, Reactivity, Source/Host and Clonality can be found in the product name and Key Features section above.

DATASHEET

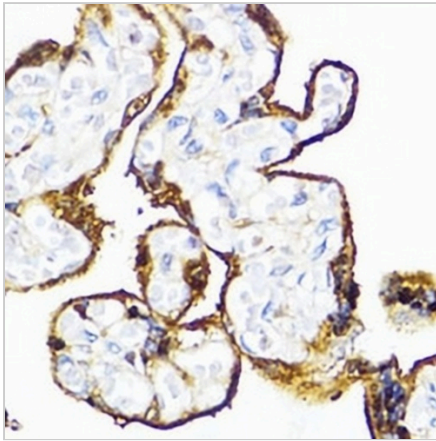
HSD17B1 Rabbit Polyclonal Antibody

CAT. NO. APA15857

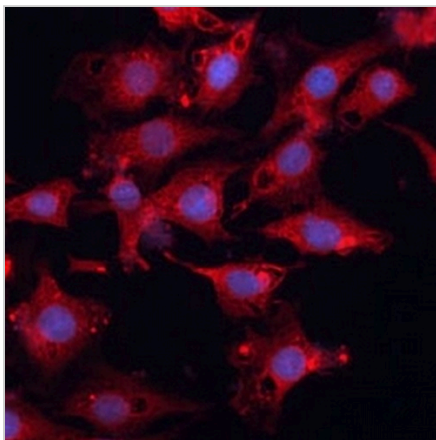
DATA



Western blot analysis of HSD17B1 expression in U87MG (A), rat ovary (B) whole cell lysates. (Predicted band size: 34 kD; Observed band size: 35 kD)



Immunohistochemical analysis of HSD17B1 staining in human placenta formalin fixed paraffin embedded tissue section. The section was pre-treated using heat mediated antigen retrieval with sodium citrate buffer (pH 6.0). The section was then incubated with the antibody at room temperature and detected using an HRP conjugated compact polymer system. DAB was used as the chromogen. The section was then counterstained with haematoxylin and mounted with DPX.



Immunofluorescent analysis of HSD17B1 staining in HeLa cells. Formalin-fixed cells were permeabilized with 0.1% Triton X-100 in TBS for 5-10 minutes and blocked with 3% BSA-PBS for 30 minutes at room temperature. Cells were probed with the primary antibody in 3% BSA-PBS and incubated overnight at 4 °C in a humidified chamber. Cells were washed with PBST and incubated with a Alexa Fluor 594-conjugated secondary antibody (red) in PBS at room temperature in the dark.

STORAGE

Store at 4°C short term. For long term storage, store at -20°C, avoiding freeze/thaw cycles.

NOTE

For Research Use Only. Not for diagnostic, therapeutics, prophylactic or in vivo use.