

## DATASHEET

# TIP30 Rabbit Polyclonal Antibody

CAT. NO. APA15867

### KEY FEATURES

Target	TIP30	Source / Host	Rabbit
Reactivity	Human	Clonality	Polyclonal
Applications	WB	Conjugation	Unconjugated
Form / Buffer	Liquid in 0.42% Potassium phosphate, 0.87% Sodium chloride, pH 7.3, 30% glycerol, and 0.01% sodium azide.		Storage at -20°C

### BACKGROUND

Represses translation by preventing reactivation of elongation factor eEF1A . May also inhibit nuclear import by competing with nuclear import substrates for binding to a subset of nuclear transport receptors . Has additionally been proposed to act as a redox sensor involved in cellular oxidative stress surveillance .

### APPLICATION

To ensure optimal assay performance, AREX recommends conducting reagent titration tailored to each testing system for optimal detection results.

WB	1:500 - 1:2000
----	----------------

\*Results are sample-specific. Please refer to your local assay conditions and test parameters for reference.

### PRODUCT OVERVIEW

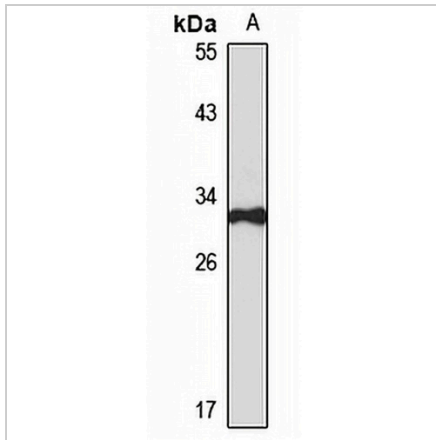
Description	Rabbit polyclonal antibody to TIP30
Specificity	Recognizes endogenous levels of TIP30 protein
Antibody Type	Primary antibody
Immunogen	KLH-conjugated synthetic peptide of human TIP30. The exact sequence is proprietary.
Purification	The antibody was purified by immunogen affinity chromatography.
Molecular Weight	Predicted: 14; Observed: 30 kD
Form/Buffer	Liquid in 0.42% Potassium phosphate, 0.87% Sodium chloride, pH 7.3, 30% glycerol, and 0.01% sodium azide.
Alternative Names	CC3; TIP30; Oxidoreductase HTATIP2; 30 kDa HIV-1 TAT-interacting protein; HIV-1 TAT-interactive protein 2
Gene Symbol	HTATIP2
Entrez Gene	10553(Human)
SwissProt	Q9BUP3(Human)

\*AREX continuously optimizes our products. Webpage content may not reflect the latest updates. For inquiries, please contact [info@arexbio.com](mailto:info@arexbio.com) or your local distributor.

\*Clone Number, Reactivity, Source/Host and Clonality can be found in the product name and Key Features section above.

**DATASHEET****TIP30 Rabbit Polyclonal Antibody**

CAT. NO. APA15867

**DATA**

Western blot analysis of TIP30 expression in LO2 (A) whole cell lysates. (Predicted band size: 14; 27; 30 kD; Observed band size: 30 kD)

**STORAGE**

Store at 4°C short term. For long term storage, store at -20°C, avoiding freeze/thaw cycles.

**NOTE**

For Research Use Only. Not for diagnostic, therapeutics, prophylactic or in vivo use.