

**DATASHEET**

**IBSP Rabbit Polyclonal Antibody**

CAT. NO. APA15876

**KEY FEATURES**

Target	IBSP	Source / Host	Rabbit
Reactivity	Human, Mouse, Rat	Clonality	Polyclonal
Applications	WB	Conjugation	Unconjugated
Form / Buffer	Liquid in 0.42% Potassium phosphate, 0.87% Sodium chloride, pH 7.3, 30% glycerol, and 0.01% sodium azide.		Storage at-20°C

**BACKGROUND**

Binds tightly to hydroxyapatite . Appears to form an integral part of the mineralized matrix . Probably important to cell-matrix interaction . Promotes adhesion and migration of various cells via the alpha-V/beta-3 integrin receptor (ITGAV:ITGB3) .

**APPLICATION**

To ensure optimal assay performance, AREX recommends conducting reagent titration tailored to each testing system for optimal detection results.

WB	1:500 - 1:2000
----	----------------

\*Results are sample-specific. Please refer to your local assay conditions and test parameters for reference.

**PRODUCT OVERVIEW**

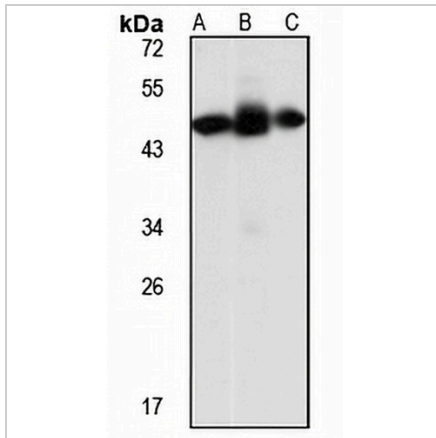
Description	Rabbit polyclonal antibody to IBSP
Specificity	Recognizes endogenous levels of IBSP protein
Antibody Type	Primary antibody
Immunogen	KLH-conjugated synthetic peptide of human IBSP. The exact sequence is proprietary.
Purification	The antibody was purified by immunogen affinity chromatography.
Molecular Weight	Predicted: 35 kD; Observed: 49 kD
Form/Buffer	Liquid in 0.42% Potassium phosphate, 0.87% Sodium chloride, pH 7.3, 30% glycerol, and 0.01% sodium azide.
Alternative Names	BNSP; Bone sialoprotein 2; Bone sialoprotein II; BSP II; Cell-binding sialoprotein; Integrin-binding sialoprotein
Gene Symbol	IBSP
Entrez Gene	3381(Human); 15891(Mouse)
SwissProt	P21815(Human); Q61711(Mouse); P13839(Rat)

\*AREX continuously optimizes our products. Webpage content may not reflect the latest updates. For inquiries, please contact [info@arexbio.com](mailto:info@arexbio.com) or your local distributor.

\*Clone Number, Reactivity, Source/Host and Clonality can be found in the product name and Key Features section above.

**DATASHEET****IBSP Rabbit Polyclonal Antibody**

CAT. NO. APA15876

**DATA**

Western blot analysis of IBSP expression in SW480 (A), mouse kidney (B), rat brain (C) whole cell lysates. (Predicted band size: 35 kD; Observed band size: 49 kD)

**STORAGE**

Store at 4°C short term. For long term storage, store at -20°C, avoiding freeze/thaw cycles.

**NOTE**

For Research Use Only. Not for diagnostic, therapeutics, prophylactic or in vivo use.