

DATASHEET

IDI1 Rabbit Polyclonal Antibody

CAT. NO. APA15879

KEY FEATURES

Target	IDI1	Source / Host	Rabbit
Reactivity	Human, Mouse, Rat	Clonality	Polyclonal
Applications	WB	Conjugation	Unconjugated
Form / Buffer	Liquid in 0.42% Potassium phosphate, 0.87% Sodium chloride, pH 7.3, 30% glycerol, and 0.01% sodium azide.		Storage at-20°C

BACKGROUND

Catalyzes the 1,3-allylic rearrangement of the homoallylic substrate isopentenyl (IPP) to its highly electrophilic allylic isomer, dimethylallyl diphosphate (DMAPP).

APPLICATION

To ensure optimal assay performance, AREX recommends conducting reagent titration tailored to each testing system for optimal detection results.

WB	1:500 - 1:2000
----	----------------

*Results are sample-specific. Please refer to your local assay conditions and test parameters for reference.

PRODUCT OVERVIEW

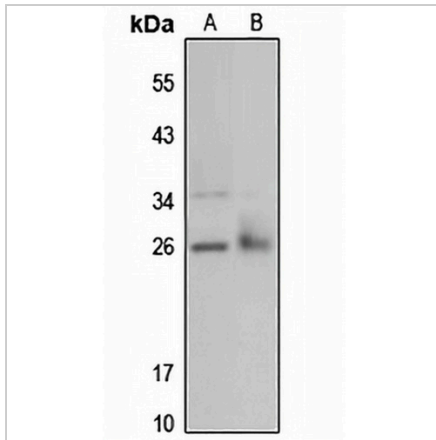
Description	Rabbit polyclonal antibody to IDI1
Specificity	Recognizes endogenous levels of IDI1 protein
Antibody Type	Primary antibody
Immunogen	Recombinant fusion protein of human IDI1. The exact sequence is proprietary.
Purification	The antibody was purified by immunogen affinity chromatography.
Molecular Weight	Predicted: 26; Observed: 26 kD
Form/Buffer	Liquid in 0.42% Potassium phosphate, 0.87% Sodium chloride, pH 7.3, 30% glycerol, and 0.01% sodium azide.
Alternative Names	Isopentenyl-diphosphate Delta-isomerase 1; Isopentenyl pyrophosphate isomerase 1; IPP isomerase 1; IPP11
Gene Symbol	IDI1
Entrez Gene	3422(Human); 102635781; 319554(Mouse); 89784(Rat)
SwissProt	Q13907(Human); P58044(Mouse); O35760(Rat)

*AREX continuously optimizes our products. Webpage content may not reflect the latest updates. For inquiries, please contact info@arexbio.com or your local distributor.

*Clone Number, Reactivity, Source/Host and Clonality can be found in the product name and Key Features section above.

DATASHEET**IDI1 Rabbit Polyclonal Antibody**

CAT. NO. APA15879

DATA

Western blot analysis of IDI1 expression in A431 (A), mouse kidney (B) whole cell lysates.
(Predicted band size: 26; 32 kD; Observed band size: 26 kD)

STORAGE

Store at 4°C short term. For long term storage, store at -20°C, avoiding freeze/thaw cycles.

NOTE

For Research Use Only. Not for diagnostic, therapeutics, prophylactic or in vivo use.