

## DATASHEET

# IDI2 Rabbit Polyclonal Antibody

CAT. NO. APA15880

### KEY FEATURES

Target	IDI2	Source / Host	Rabbit
Reactivity	Human	Clonality	Polyclonal
Applications	WB	Conjugation	Unconjugated
Form / Buffer	Liquid in 0.42% Potassium phosphate, 0.87% Sodium chloride, pH 7.3, 30% glycerol, and 0.01% sodium azide.		Storage at -20°C

### BACKGROUND

Catalyzes the 1,3-allylic rearrangement of the homoallylic substrate isopentenyl (IPP) to its highly electrophilic allylic isomer, dimethylallyl diphosphate (DMAPP).

### APPLICATION

To ensure optimal assay performance, AREX recommends conducting reagent titration tailored to each testing system for optimal detection results.

WB	1:500 - 1:2000
----	----------------

\*Results are sample-specific. Please refer to your local assay conditions and test parameters for reference.

### PRODUCT OVERVIEW

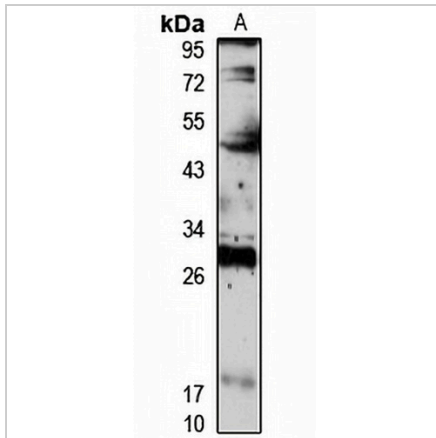
Description	Rabbit polyclonal antibody to IDI2
Specificity	Recognizes endogenous levels of IDI2 protein
Antibody Type	Primary antibody
Immunogen	Recombinant fusion protein of human IDI2. The exact sequence is proprietary.
Purification	The antibody was purified by immunogen affinity chromatography.
Molecular Weight	Predicted: 26 kD; Observed: 27 kD
Form/Buffer	Liquid in 0.42% Potassium phosphate, 0.87% Sodium chloride, pH 7.3, 30% glycerol, and 0.01% sodium azide.
Alternative Names	Isopentenyl-diphosphate delta-isomerase 2; Isopentenyl pyrophosphate isomerase 2; IPP isomerase 2; IPPI2
Gene Symbol	IDI2
Entrez Gene	91734(Human)
SwissProt	Q9BXS1(Human)

\*AREX continuously optimizes our products. Webpage content may not reflect the latest updates. For inquiries, please contact [info@arexbio.com](mailto:info@arexbio.com) or your local distributor.

\*Clone Number, Reactivity, Source/Host and Clonality can be found in the product name and Key Features section above.

**DATASHEET****IDI2 Rabbit Polyclonal Antibody**

CAT. NO. APA15880

**DATA**

Western blot analysis of IDI2 expression in HEK293T (A) whole cell lysates. (Predicted band size: 26 kD; Observed band size: 27 kD)

**STORAGE**

Store at 4°C short term. For long term storage, store at -20°C, avoiding freeze/thaw cycles.

**NOTE**

For Research Use Only. Not for diagnostic, therapeutics, prophylactic or in vivo use.