

DATASHEET

GILT Rabbit Polyclonal Antibody

CAT. NO. APA15883

KEY FEATURES

| | | | |
|---------------|---|---------------|---------------------|
| Target | GILT | Source / Host | Rabbit |
| Reactivity | Human, Mouse, Rat | Clonality | Polyclonal |
| Applications | WB | Conjugation | Unconjugated |
| Form / Buffer | Liquid in 0.42% Potassium phosphate, 0.87% Sodium chloride, pH 7.3, 30% glycerol, and 0.01% sodium azide. | | Storage at -20°C |

BACKGROUND

Lysosomal thiol reductase that catalyzes protein disulfide bonds reduction . Plays an important role in antigen processing and presentation, of namely both major histocompatibility complex (MHC) class I- and class II-restricted antigen by reducing the disulfide bonds of endocytosed proteins and facilitating their unfolding and optimal degradation . Shares with thioredoxin a reduction mechanism in which the N-terminal cysteine thiol group in the CXXC active site motif initiates a nucleophilic attack on the substrate disulfide bond, resulting in the formation of a mixed disulfide-linked enzyme-substrate intermediate (Probable). Subsequent intramolecular attack by the second cysteine thiol group enables the release of the reduced substrate and oxidized enzyme (Probable).

APPLICATION

To ensure optimal assay performance, AREX recommends conducting reagent titration tailored to each testing system for optimal detection results.

| | |
|----|----------------|
| WB | 1:500 - 1:2000 |
|----|----------------|

*Results are sample-specific. Please refer to your local assay conditions and test parameters for reference.

PRODUCT OVERVIEW

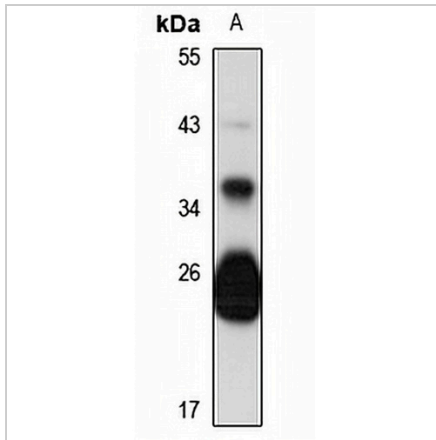
| | |
|-------------------|--|
| Description | Rabbit polyclonal antibody to GILT |
| Specificity | Recognizes endogenous levels of GILT protein |
| Antibody Type | Primary antibody |
| Immunogen | Recombinant fusion protein of human GILT. The exact sequence is proprietary. |
| Purification | The antibody was purified by immunogen affinity chromatography. |
| Molecular Weight | Predicted: 27 kD; Observed: 28 kD |
| Form/Buffer | Liquid in 0.42% Potassium phosphate, 0.87% Sodium chloride, pH 7.3, 30% glycerol, and 0.01% sodium azide. |
| Alternative Names | GILT; IP30; Gamma-interferon-inducible lysosomal thiol reductase; Gamma-interferon-inducible protein IP-30; Legumaturain |
| Gene Symbol | IFI30 |
| Entrez Gene | 10437(Human); 65972(Mouse); 290644(Rat) |
| SwissProt | P13284(Human); Q9ESY9(Mouse); Q499T2(Rat) |

*AREX continuously optimizes our products. Webpage content may not reflect the latest updates. For inquiries, please contact info@arexbio.com or your local distributor.

*Clone Number, Reactivity, Source/Host and Clonality can be found in the product name and Key Features section above.

DATASHEET**GILT Rabbit Polyclonal Antibody**

CAT. NO. APA15883

DATA

Western blot analysis of GILT expression in Raji (A) whole cell lysates. (Predicted band size: 27 kD; Observed band size: 28 kD)

STORAGE

Store at 4°C short term. For long term storage, store at -20°C, avoiding freeze/thaw cycles.

NOTE

For Research Use Only. Not for diagnostic, therapeutics, prophylactic or in vivo use.