

DATASHEET

IFI-44L Rabbit Polyclonal Antibody

CAT. NO. APA15884

KEY FEATURES

Target	IFI-44L	Source / Host	Rabbit
Reactivity	Human, Mouse	Clonality	Polyclonal
Applications	WB	Conjugation	Unconjugated
Form / Buffer	Liquid in 0.42% Potassium phosphate, 0.87% Sodium chloride, pH 7.3, 30% glycerol, and 0.01% sodium azide.		Storage at-20°C

BACKGROUND

Type I interferon-stimulated gene (ISG) that plays a critical role in antiviral and antibacterial activity that plays a critical role in antiviral and antibacterial activity . During bacterial infection, promotes macrophage differentiation and facilitates inflammatory cytokine secretion . Plays a role in the control of respiratory syncytial virus/RSV infection, reducing the ability of the virus to replicate . Exhibits a low antiviral activity against hepatitis C virus . Also acts as a feedback regulator of IFN responses by negatively regulating IKBKB and IKBKE kinase activities through interaction with FKBP5 .

APPLICATION

To ensure optimal assay performance, AREX recommends conducting reagent titration tailored to each testing system for optimal detection results.

WB	1:500 - 1:2000
----	----------------

*Results are sample-specific. Please refer to your local assay conditions and test parameters for reference.

PRODUCT OVERVIEW

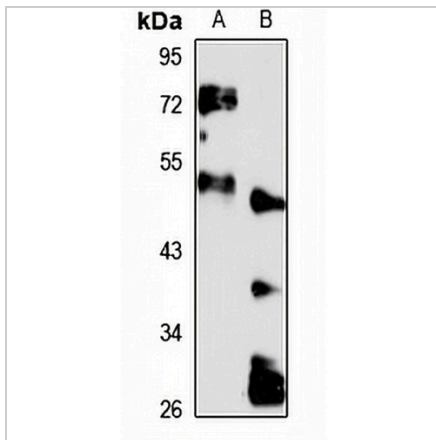
Description	Rabbit polyclonal antibody to IFI-44L
Specificity	Recognizes endogenous levels of IFI-44L protein
Antibody Type	Primary antibody
Immunogen	Recombinant fusion protein of human IFI-44L. The exact sequence is proprietary.
Purification	The antibody was purified by immunogen affinity chromatography.
Molecular Weight	Predicted: 18; Observed: 51 kD
Form/Buffer	Liquid in 0.42% Potassium phosphate, 0.87% Sodium chloride, pH 7.3, 30% glycerol, and 0.01% sodium azide.
Alternative Names	C1orf29; Interferon-induced protein 44-like
Gene Symbol	IFI44L
Entrez Gene	10964(Human); 15061(Mouse)
SwissProt	Q53G44(Human); Q9BDB7(Mouse)

*AREX continuously optimizes our products. Webpage content may not reflect the latest updates. For inquiries, please contact info@arexbio.com or your local distributor.

*Clone Number, Reactivity, Source/Host and Clonality can be found in the product name and Key Features section above.

DATASHEET**IFI-44L Rabbit Polyclonal Antibody**

CAT. NO. APA15884

DATA

Western blot analysis of IFI-44L expression in HeLa (A), mouse spleen (B) whole cell lysates. (Predicted band size: 18; 51 kD; Observed band size: 51 kD)

STORAGE

Store at 4°C short term. For long term storage, store at -20°C, avoiding freeze/thaw cycles.

NOTE

For Research Use Only. Not for diagnostic, therapeutics, prophylactic or in vivo use.