

DATASHEET

IFT88 Rabbit Polyclonal Antibody

CAT. NO. APA15893

KEY FEATURES

Target	IFT88	Source / Host	Rabbit
Reactivity	Human, Mouse, Rat	Clonality	Polyclonal
Applications	WB, IF/ICC	Conjugation	Unconjugated
Form / Buffer	Liquid in 0.42% Potassium phosphate, 0.87% Sodium chloride, pH 7.3, 30% glycerol, and 0.01% sodium azide.		Storage at -20°C

BACKGROUND

Positively regulates primary cilium biogenesis. Also involved in autophagy since it is required for trafficking of ATG16L and the expansion of the autophagic compartment.

APPLICATION

To ensure optimal assay performance, AREX recommends conducting reagent titration tailored to each testing system for optimal detection results.

WB	1:500 - 1:2000
IF/ICC	1:50 - 1:200

*Results are sample-specific. Please refer to your local assay conditions and test parameters for reference.

PRODUCT OVERVIEW

Description	Rabbit polyclonal antibody to IFT88
Specificity	Recognizes endogenous levels of IFT88 protein
Antibody Type	Primary antibody
Immunogen	Recombinant fusion protein of human IFT88. The exact sequence is proprietary.
Purification	The antibody was purified by immunogen affinity chromatography.
Molecular Weight	Predicted: 92; Observed: 108 kD
Form/Buffer	Liquid in 0.42% Potassium phosphate, 0.87% Sodium chloride, pH 7.3, 30% glycerol, and 0.01% sodium azide.
Alternative Names	TG737; TTC10; Intraflagellar transport protein 88 homolog; Recessive polycystic kidney disease protein Tg737 homolog; Tetratricopeptide repeat protein 10; TPR repeat protein 10
Gene Symbol	IFT88
Entrez Gene	8100(Human); 21821(Mouse)
SwissProt	Q13099(Human); Q61371(Mouse)

*AREX continuously optimizes our products. Webpage content may not reflect the latest updates. For inquiries, please contact info@arexbio.com or your local distributor.

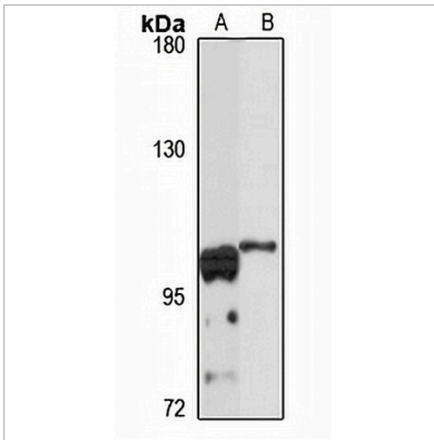
*Clone Number, Reactivity, Source/Host and Clonality can be found in the product name and Key Features section above.

DATASHEET

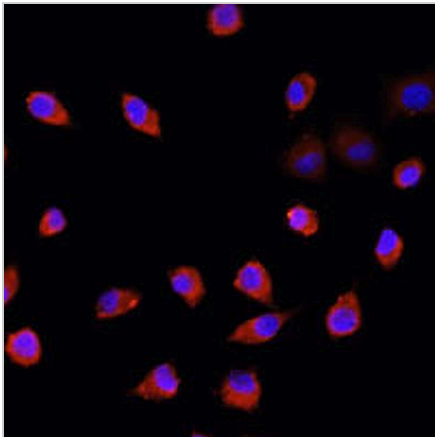
IFT88 Rabbit Polyclonal Antibody

CAT. NO. APA15893

DATA



Western blot analysis of IFT88 expression in HepG2 (A), mouse brain (B) whole cell lysates. (Predicted band size: 92; 93; 94 kD; Observed band size: 108 kD)



Immunofluorescent analysis of IFT88 staining in L929 cells. Formalin-fixed cells were permeabilized with 0.1% Triton X-100 in TBS for 5-10 minutes and blocked with 3% BSA-PBS for 30 minutes at room temperature. Cells were probed with the primary antibody in 3% BSA-PBS and incubated overnight at 4 °C in a humidified chamber. Cells were washed with PBST and incubated with a AREX® Fluor 594-conjugated secondary antibody (red) in PBS at room temperature in the dark. DAPI was used to stain the cell nuclei (blue).

STORAGE

Store at 4°C short term. For long term storage, store at -20°C, avoiding freeze/thaw cycles.

NOTE

For Research Use Only. Not for diagnostic, therapeutics, prophylactic or in vivo use.