

DATASHEET

IGBP1 Rabbit Polyclonal Antibody

CAT. NO. APA15894

KEY FEATURES

Target	IGBP1	Source / Host	Rabbit
Reactivity	Human, Mouse, Rat	Clonality	Polyclonal
Applications	WB	Conjugation	Unconjugated
Form / Buffer	Liquid in 0.42% Potassium phosphate, 0.87% Sodium chloride, pH 7.3, 30% glycerol, and 0.01% sodium azide.		Storage at -20°C

BACKGROUND

Associated to surface IgM-receptor; may be involved in signal transduction. Involved in regulation of the catalytic activity of the phosphatases PP2A, PP4 and PP6 by protecting their partially folded catalytic subunits from degradative polyubiquitination until they associate with regulatory subunits.

APPLICATION

To ensure optimal assay performance, AREX recommends conducting reagent titration tailored to each testing system for optimal detection results.

WB	1:500 - 1:2000
----	----------------

*Results are sample-specific. Please refer to your local assay conditions and test parameters for reference.

PRODUCT OVERVIEW

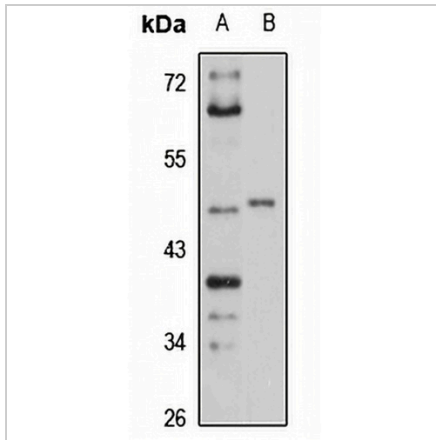
Description	Rabbit polyclonal antibody to IGBP1
Specificity	Recognizes endogenous levels of IGBP1 protein
Antibody Type	Primary antibody
Immunogen	Recombinant fusion protein of human IGBP1. The exact sequence is proprietary.
Purification	The antibody was purified by immunogen affinity chromatography.
Molecular Weight	Predicted: 39 kD; Observed: 46 kD
Form/Buffer	Liquid in 0.42% Potassium phosphate, 0.87% Sodium chloride, pH 7.3, 30% glycerol, and 0.01% sodium azide.
Alternative Names	IBP1; Immunoglobulin-binding protein 1; B-cell signal transduction molecule alpha 4; Protein alpha-4; CD79a-binding protein 1; Protein phosphatase 2/4/6 regulatory subunit; Renal carcinoma antigen NY-REN-16
Gene Symbol	IGBP1
Entrez Gene	3476(Human); 18518(Mouse); 58845(Rat)
SwissProt	P78318(Human); Q61249(Mouse); O08836(Rat)

*AREX continuously optimizes our products. Webpage content may not reflect the latest updates. For inquiries, please contact info@arexbio.com or your local distributor.

*Clone Number, Reactivity, Source/Host and Clonality can be found in the product name and Key Features section above.

DATASHEET**IGBP1 Rabbit Polyclonal Antibody**

CAT. NO. APA15894

DATA

Western blot analysis of IGBP1 expression in Raji (A), mouse spleen (B) whole cell lysates.
(Predicted band size: 39 kD; Observed band size: 46 kD)

STORAGE

Store at 4°C short term. For long term storage, store at -20°C, avoiding freeze/thaw cycles.

NOTE

For Research Use Only. Not for diagnostic, therapeutics, prophylactic or in vivo use.