

DATASHEET

IGFBP6 Rabbit Polyclonal Antibody

CAT. NO. APA15895

KEY FEATURES

Target	IGFBP6	Source / Host	Rabbit
Reactivity	Human, Mouse, Rat	Clonality	Polyclonal
Applications	WB	Conjugation	Unconjugated
Form / Buffer	Liquid in 0.42% Potassium phosphate, 0.87% Sodium chloride, pH 7.3, 30% glycerol, and 0.01% sodium azide.		Storage at -20°C

BACKGROUND

IGF-binding proteins prolong the half-life of the IGFs and have been shown to either inhibit or stimulate the growth promoting effects of the IGFs on cell culture. They alter the interaction of IGFs with their cell surface receptors. Activates the MAPK signaling pathway and induces cell migration .

APPLICATION

To ensure optimal assay performance, AREX recommends conducting reagent titration tailored to each testing system for optimal detection results.

WB	1:500 - 1:2000
----	----------------

*Results are sample-specific. Please refer to your local assay conditions and test parameters for reference.

PRODUCT OVERVIEW

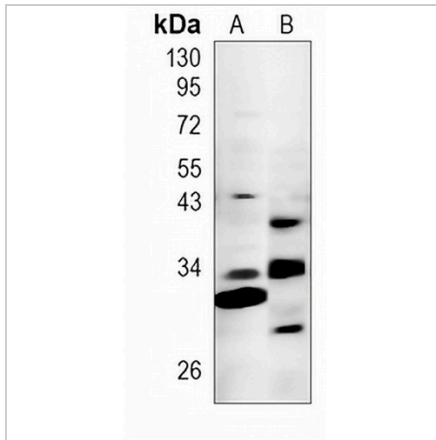
Description	Rabbit polyclonal antibody to IGFBP6
Specificity	Recognizes endogenous levels of IGFBP6 protein
Antibody Type	Primary antibody
Immunogen	Recombinant fusion protein of human IGFBP6. The exact sequence is proprietary.
Purification	The antibody was purified by immunogen affinity chromatography.
Molecular Weight	Predicted: 25 kD; Observed: 33 kD
Form/Buffer	Liquid in 0.42% Potassium phosphate, 0.87% Sodium chloride, pH 7.3, 30% glycerol, and 0.01% sodium azide.
Alternative Names	IBP6; Insulin-like growth factor-binding protein 6; IBP-6; IGF-binding protein 6; IGFBP-6
Gene Symbol	IGFBP6
Entrez Gene	3489(Human); 16012(Mouse)
SwissProt	P24592(Human); P47880(Mouse)

*AREX continuously optimizes our products. Webpage content may not reflect the latest updates. For inquiries, please contact info@arexbio.com or your local distributor.

*Clone Number, Reactivity, Source/Host and Clonality can be found in the product name and Key Features section above.

DATASHEET**IGFBP6 Rabbit Polyclonal Antibody**

CAT. NO. APA15895

DATA

Western blot analysis of IGFBP6 expression in mouse kidney (A), rat kidney (B) whole cell lysates. (Predicted band size: 25 kD; Observed band size: 33 kD)

STORAGE

Store at 4°C short term. For long term storage, store at -20°C, avoiding freeze/thaw cycles.

NOTE

For Research Use Only. Not for diagnostic, therapeutics, prophylactic or in vivo use.