

DATASHEET

IGFBP7 Rabbit Polyclonal Antibody

CAT. NO. APA15896

KEY FEATURES

Target	IGFBP7	Source / Host	Rabbit
Reactivity	Human, Mouse, Rat	Clonality	Polyclonal
Applications	WB	Conjugation	Unconjugated
Form / Buffer	Liquid in 0.42% Potassium phosphate, 0.87% Sodium chloride, pH 7.3, 30% glycerol, and 0.01% sodium azide.		Storage at-20°C

BACKGROUND

Binds IGF1 and IGF2 with a relatively low affinity. Stimulates prostacyclin (PGI2) production. Stimulates cell adhesion. Acts as a ligand for CD93 to play a role in angiogenesis production. Stimulates cell adhesion. Acts as a ligand for CD93 to play a role in angiogenesis .

APPLICATION

To ensure optimal assay performance, AREX recommends conducting reagent titration tailored to each testing system for optimal detection results.

WB	1:500 - 1:2000
----	----------------

*Results are sample-specific. Please refer to your local assay conditions and test parameters for reference.

PRODUCT OVERVIEW

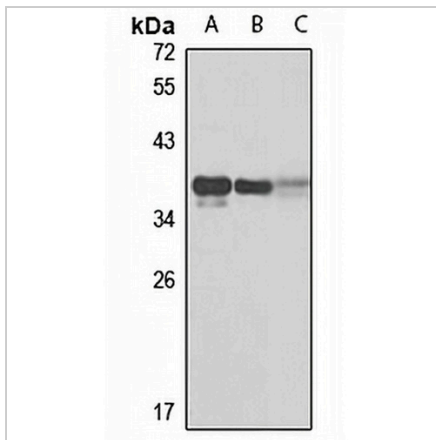
Description	Rabbit polyclonal antibody to IGFBP7
Specificity	Recognizes endogenous levels of IGFBP7 protein
Antibody Type	Primary antibody
Immunogen	KLH-conjugated synthetic peptide of human IGFBP7. The exact sequence is proprietary.
Purification	The antibody was purified by immunogen affinity chromatography.
Molecular Weight	Predicted: 28; Observed: 37 kD
Form/Buffer	Liquid in 0.42% Potassium phosphate, 0.87% Sodium chloride, pH 7.3, 30% glycerol, and 0.01% sodium azide.
Alternative Names	MAC25; PSF; Insulin-like growth factor-binding protein 7; IBP-7; IGF-binding protein 7; IGFBP-7; IGFBP-rP1; MAC25 protein; PGI2-stimulating factor; Prostacyclin-stimulating factor; Tumor-derived adhesion factor; TAF
Gene Symbol	IGFBP7
Entrez Gene	3490(Human); 29817(Mouse)
SwissProt	Q16270(Human); Q61581(Mouse)

*AREX continuously optimizes our products. Webpage content may not reflect the latest updates. For inquiries, please contact info@arexbio.com or your local distributor.

*Clone Number, Reactivity, Source/Host and Clonality can be found in the product name and Key Features section above.

DATASHEET**IGFBP7 Rabbit Polyclonal Antibody**

CAT. NO. APA15896

DATA

Western blot analysis of IGFBP7 expression in K562 (A), HEK293T (B), mouse spleen (C) whole cell lysates. (Predicted band size: 28; 29 kD; Observed band size: 37 kD)

STORAGE

Store at 4°C short term. For long term storage, store at -20°C, avoiding freeze/thaw cycles.

NOTE

For Research Use Only. Not for diagnostic, therapeutics, prophylactic or in vivo use.