

DATASHEET

IGSF3 Rabbit Polyclonal Antibody

CAT. NO. APA15900

KEY FEATURES

Target	IGSF3	Source / Host	Rabbit
Reactivity	Human, Mouse	Clonality	Polyclonal
Applications	WB	Conjugation	Unconjugated
Form / Buffer	Liquid in 0.42% Potassium phosphate, 0.87% Sodium chloride, pH 7.3, 30% glycerol, and 0.01% sodium azide.		Storage at -20°C

BACKGROUND

The protein encoded by this gene is an immunoglobulin-like membrane protein containing several V-type Ig-like domains. A mutation in this gene has been associated with bilateral nasolacrimal duct obstruction (LCDD).

APPLICATION

To ensure optimal assay performance, AREX recommends conducting reagent titration tailored to each testing system for optimal detection results.

WB	1:500 - 1:1000
----	----------------

*Results are sample-specific. Please refer to your local assay conditions and test parameters for reference.

PRODUCT OVERVIEW

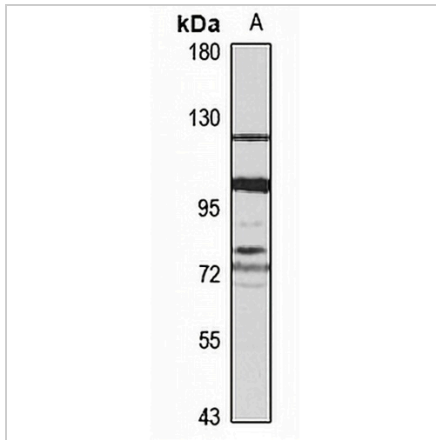
Description	Rabbit polyclonal antibody to IGSF3
Specificity	Recognizes endogenous levels of IGSF3 protein
Antibody Type	Primary antibody
Immunogen	Recombinant fusion protein of human IGSF3. The exact sequence is proprietary.
Purification	The antibody was purified by immunogen affinity chromatography.
Molecular Weight	Predicted: 135; Observed: 125 kD
Form/Buffer	Liquid in 0.42% Potassium phosphate, 0.87% Sodium chloride, pH 7.3, 30% glycerol, and 0.01% sodium azide.
Alternative Names	EWI3; KIAA0466; Immunoglobulin superfamily member 3; IgSF3; Glu-Trp-Ile EWI motif-containing protein 3; EWI-3
Gene Symbol	IGSF3
Entrez Gene	3321(Human); 78908(Mouse)
SwissProt	O75054(Human); Q6ZQA6(Mouse)

*AREX continuously optimizes our products. Webpage content may not reflect the latest updates. For inquiries, please contact info@arexbio.com or your local distributor.

*Clone Number, Reactivity, Source/Host and Clonality can be found in the product name and Key Features section above.

DATASHEET**IGSF3 Rabbit Polyclonal Antibody**

CAT. NO. APA15900

DATA

Western blot analysis of IGSF3 expression in MCF7 (A) whole cell lysates. (Predicted band size: 135; 137 kD; Observed band size: 125 kD)

STORAGE

Store at 4°C short term. For long term storage, store at -20°C, avoiding freeze/thaw cycles.

NOTE

For Research Use Only. Not for diagnostic, therapeutics, prophylactic or in vivo use.