

**DATASHEET**

**IGSF6 Rabbit Polyclonal Antibody**

CAT. NO. APA15901

**KEY FEATURES**

|               |   |               |                     |
|---------------|---|---------------|---------------------|
| Target        | IGSF6   | Source / Host | Rabbit              |
| Reactivity    | Human, Mouse, Rat   | Clonality     | Polyclonal          |
| Applications  | WB  | Conjugation   | Unconjugated        |
| Form / Buffer | Liquid in 0.42% Potassium phosphate, 0.87% Sodium chloride, pH 7.3, 30% glycerol, and 0.01% sodium azide. |               | Storage<br>at -20°C |

**BACKGROUND**

Immunoglobulin superfamily member 6 (IGSF6), also known as Protein DORA. Subcellular location: Membrane Tissue specificity: Expressed in peripheral blood lymphocytes, spleen and lymph node, with low levels in thymus, bone marrow and fetal liver. No expression in non-immune tissues Induction: By TNF and CSF2/GM-CSF in dendritic cells and down regulation by phorbol myristate acetate (PMA) and ionomycin in monocytes

**APPLICATION**

To ensure optimal assay performance, AREX recommends conducting reagent titration tailored to each testing system for optimal detection results.

|    |                |
|----|----------------|
| WB | 1:500 - 1:2000 |
|----|----------------|

\*Results are sample-specific. Please refer to your local assay conditions and test parameters for reference.

**PRODUCT OVERVIEW**

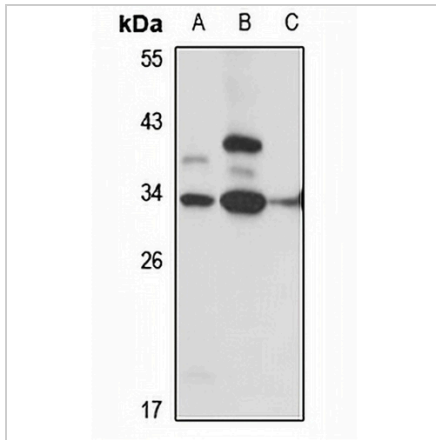
|                   |   |
|-------------------|---|
| Description       | Rabbit polyclonal antibody to IGSF6   |
| Specificity       | Recognizes endogenous levels of IGSF6 protein   |
| Antibody Type     | Primary antibody  |
| Immunogen         | Recombinant fusion protein of human IGSF6. The exact sequence is proprietary.                             |
| Purification      | The antibody was purified by immunogen affinity chromatography.   |
| Molecular Weight  | Predicted: 27 kD; Observed: 30 kD   |
| Form/Buffer       | Liquid in 0.42% Potassium phosphate, 0.87% Sodium chloride, pH 7.3, 30% glycerol, and 0.01% sodium azide. |
| Alternative Names | DORA; Immunoglobulin superfamily member 6; IgSF6; Protein DORA  |
| Gene Symbol       | IGSF6   |
| Entrez Gene       | 10261(Human); 80719(Mouse); 171064(Rat)   |
| SwissProt         | O95976(Human); P0C6B7(Mouse); Q9Z0K5(Rat)   |

\*AREX continuously optimizes our products. Webpage content may not reflect the latest updates. For inquiries, please contact [info@arexbio.com](mailto:info@arexbio.com) or your local distributor.

\*Clone Number, Reactivity, Source/Host and Clonality can be found in the product name and Key Features section above.

**DATASHEET****IGSF6 Rabbit Polyclonal Antibody**

CAT. NO. APA15901

**DATA**

Western blot analysis of IGSF6 expression in HEK293T (A), mouse liver (B), rat spleen (C) whole cell lysates. (Predicted band size: 27 kD; Observed band size: 30 kD)

**STORAGE**

Store at 4°C short term. For long term storage, store at -20°C, avoiding freeze/thaw cycles.

**NOTE**

For Research Use Only. Not for diagnostic, therapeutics, prophylactic or in vivo use.