

**DATASHEET**

**IL-17RE Rabbit Polyclonal Antibody**

CAT. NO. APA15905

**KEY FEATURES**

Target	IL-17RE	Source / Host	Rabbit
Reactivity	Human, Mouse, Rat	Clonality	Polyclonal
Applications	WB	Conjugation	Unconjugated
Form / Buffer	Liquid in 0.42% Potassium phosphate, 0.87% Sodium chloride, pH 7.3, 30% glycerol, and 0.01% sodium azide.		Storage at -20°C

**BACKGROUND**

Specific functional receptor for IL17C. May be signaling through the NF-kappa-B and MAPK pathways. May require TRAF3IP2 /ACT1 for signaling. May be a crucial regulator in innate immunity to bacterial pathogens. Isoform 2 and isoform 4 may be either cytoplasmic inactive or dominant active forms. Isoform 3 and isoform 5 may act as soluble decoy receptors.

**APPLICATION**

To ensure optimal assay performance, AREX recommends conducting reagent titration tailored to each testing system for optimal detection results.

WB	1:500 - 1:2000
----	----------------

\*Results are sample-specific. Please refer to your local assay conditions and test parameters for reference.

**PRODUCT OVERVIEW**

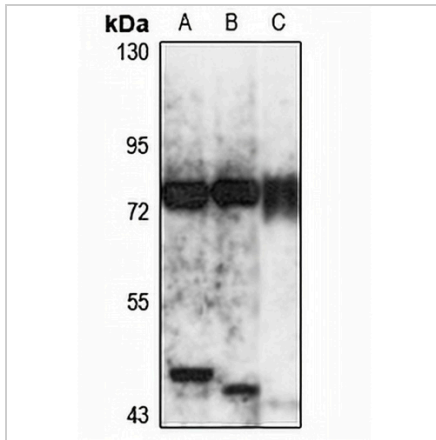
Description	Rabbit polyclonal antibody to IL-17RE
Specificity	Recognizes endogenous levels of IL-17RE protein
Antibody Type	Primary antibody
Immunogen	Recombinant fusion protein of human IL-17RE. The exact sequence is proprietary.
Purification	The antibody was purified by immunogen affinity chromatography.
Molecular Weight	Predicted: 30; Observed: 75 kD
Form/Buffer	Liquid in 0.42% Potassium phosphate, 0.87% Sodium chloride, pH 7.3, 30% glycerol, and 0.01% sodium azide.
Alternative Names	Interleukin-17 receptor E; IL-17 receptor E; IL-17RE
Gene Symbol	IL17RE
Entrez Gene	132014(Human); 57890(Mouse); 362417(Rat)
SwissProt	Q8NFR9(Human); Q8BH06(Mouse); Q6AZ51(Rat)

\*AREX continuously optimizes our products. Webpage content may not reflect the latest updates. For inquiries, please contact [info@arexbio.com](mailto:info@arexbio.com) or your local distributor.

\*Clone Number, Reactivity, Source/Host and Clonality can be found in the product name and Key Features section above.

**DATASHEET****IL-17RE Rabbit Polyclonal Antibody**

CAT. NO. APA15905

**DATA**

Western blot analysis of IL-17RE expression in A549 (A), A431 (B), mouse kidney (C) whole cell lysates. (Predicted band size: 30; 43; 58; 61; 74 kD; Observed band size: 75 kD)

**STORAGE**

Store at 4°C short term. For long term storage, store at -20°C, avoiding freeze/thaw cycles.

**NOTE**

For Research Use Only. Not for diagnostic, therapeutics, prophylactic or in vivo use.