

## DATASHEET

# IL1RAPL1 Rabbit Polyclonal Antibody

CAT. NO. APA15906

### KEY FEATURES

Target	IL1RAPL1	Source / Host	Rabbit
Reactivity	Human, Mouse, Rat	Clonality	Polyclonal
Applications	WB	Conjugation	Unconjugated
Form / Buffer	Liquid in 0.42% Potassium phosphate, 0.87% Sodium chloride, pH 7.3, 30% glycerol, and 0.01% sodium azide.		Storage at-20°C

### BACKGROUND

May regulate secretion and presynaptic differentiation through inhibition of the activity of N-type voltage-gated calcium channel . May activate the MAP kinase JNK . Plays a role in neurite outgrowth . During dendritic spine formation can bidirectionally induce pre- and post-synaptic differentiation of neurons by trans-synaptically binding to PTPRD .

### APPLICATION

To ensure optimal assay performance, AREX recommends conducting reagent titration tailored to each testing system for optimal detection results.

WB	1:500 - 1:2000
----	----------------

\*Results are sample-specific. Please refer to your local assay conditions and test parameters for reference.

### PRODUCT OVERVIEW

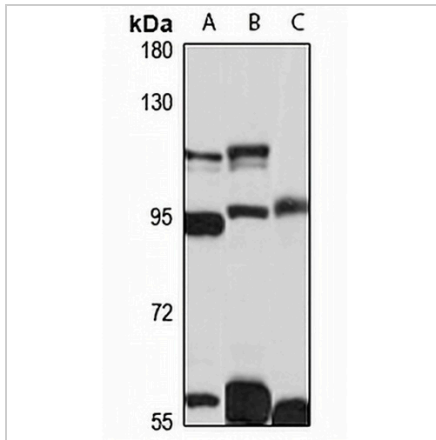
Description	Rabbit polyclonal antibody to IL1RAPL1
Specificity	Recognizes endogenous levels of IL1RAPL1 protein
Antibody Type	Primary antibody
Immunogen	Recombinant fusion protein of human IL1RAPL1. The exact sequence is proprietary.
Purification	The antibody was purified by immunogen affinity chromatography.
Molecular Weight	Predicted: 79 kD; Observed: 90 kD
Form/Buffer	Liquid in 0.42% Potassium phosphate, 0.87% Sodium chloride, pH 7.3, 30% glycerol, and 0.01% sodium azide.
Alternative Names	OPHN4; Interleukin-1 receptor accessory protein-like 1; IL-1-RAPL-1; IL-1RAPL-1; IL1RAPL-1; Oligophrenin-4; Three immunoglobulin domain-containing IL-1 receptor-related 2; TIGIRR-2; X-linked interleukin-1 receptor accessory protein-like 1
Gene Symbol	IL1RAPL1
Entrez Gene	11141(Human); 317553(Rat)
SwissProt	Q9NZN1(Human); P59823(Mouse); P59824(Rat)

\*AREX continuously optimizes our products. Webpage content may not reflect the latest updates. For inquiries, please contact [info@arexbio.com](mailto:info@arexbio.com) or your local distributor.

\*Clone Number, Reactivity, Source/Host and Clonality can be found in the product name and Key Features section above.

**DATASHEET****IL1RAPL1 Rabbit Polyclonal Antibody**

CAT. NO. APA15906

**DATA**

Western blot analysis of IL1RAPL1 expression in A431 (A), mouse brain (B), rat heart (C) whole cell lysates. (Predicted band size: 79 kD; Observed band size: 90 kD)

**STORAGE**

Store at 4°C short term. For long term storage, store at -20°C, avoiding freeze/thaw cycles.

**NOTE**

For Research Use Only. Not for diagnostic, therapeutics, prophylactic or in vivo use.