

DATASHEET

IL-1R9 Rabbit Polyclonal Antibody

CAT. NO. APA15907

KEY FEATURES

Target	IL-1R9	Source / Host	Rabbit
Reactivity	Human, Mouse	Clonality	Polyclonal
Applications	WB	Conjugation	Unconjugated
Form / Buffer	Liquid in 0.42% Potassium phosphate, 0.87% Sodium chloride, pH 7.3, 30% glycerol, and 0.01% sodium azide.		Storage at -20°C

BACKGROUND

The protein encoded by this gene is a member of the interleukin 1 receptor family. This protein is similar to the interleukin 1 accessory proteins, and is most closely related to interleukin 1 receptor accessory protein-like 1 (IL1RAPL1). This gene and IL1RAPL1 are located at a region on chromosome X that is associated with X-linked non-syndromic cognitive disability.

APPLICATION

To ensure optimal assay performance, AREX recommends conducting reagent titration tailored to each testing system for optimal detection results.

WB	1:500 - 1:2000
----	----------------

*Results are sample-specific. Please refer to your local assay conditions and test parameters for reference.

PRODUCT OVERVIEW

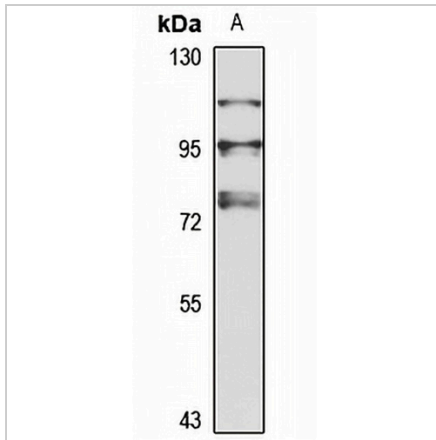
Description	Rabbit polyclonal antibody to IL-1R9
Specificity	Recognizes endogenous levels of IL-1R9 protein
Antibody Type	Primary antibody
Immunogen	Recombinant fusion protein of human IL-1R9. The exact sequence is proprietary.
Purification	The antibody was purified by immunogen affinity chromatography.
Molecular Weight	Predicted: 78 kD; Observed: 80 kD
Form/Buffer	Liquid in 0.42% Potassium phosphate, 0.87% Sodium chloride, pH 7.3, 30% glycerol, and 0.01% sodium azide.
Alternative Names	IL1R9; X-linked interleukin-1 receptor accessory protein-like 2; IL-1 receptor accessory protein-like 2; IL-1-RAPL-2; IL-1RAPL-2; IL1RAPL-2; IL1RAPL-2-related protein; Interleukin-1 receptor 9; IL-1R-9; IL-1R9; Three immunoglobulin domain-containing IL-1 receptor-related 1; TIGIRR-1
Gene Symbol	IL1RAPL2
Entrez Gene	26280(Human); 60367(Mouse)
SwissProt	Q9NP60(Human); Q9ERS6(Mouse)

*AREX continuously optimizes our products. Webpage content may not reflect the latest updates. For inquiries, please contact info@arexbio.com or your local distributor.

*Clone Number, Reactivity, Source/Host and Clonality can be found in the product name and Key Features section above.

DATASHEET**IL-1R9 Rabbit Polyclonal Antibody**

CAT. NO. APA15907

DATA

Western blot analysis of IL-1R9 expression in U87MG (A) whole cell lysates. (Predicted band size: 78 kD; Observed band size: 80 kD)

STORAGE

Store at 4°C short term. For long term storage, store at -20°C, avoiding freeze/thaw cycles.

NOTE

For Research Use Only. Not for diagnostic, therapeutics, prophylactic or in vivo use.