

DATASHEET

IL-20 Rabbit Polyclonal Antibody

CAT. NO. APA15909

KEY FEATURES

Target	IL-20	Source / Host	Rabbit
Reactivity	Human, Mouse	Clonality	Polyclonal
Applications	WB, IHC, IF/ICC	Conjugation	Unconjugated
Form / Buffer	Liquid in 0.42% Potassium phosphate, 0.87% Sodium chloride, pH 7.3, 30% glycerol, and 0.01% sodium azide.		Storage at -20°C

BACKGROUND

Pro-inflammatory and angiogenic cytokine mainly secreted by monocytes and skin keratinocytes that plays crucial roles in immune responses, regulation of inflammatory responses, hemopoiesis, as well as epidermal cell and keratinocyte differentiation. Enhances tissue remodeling and wound-healing activities and restores the homeostasis of epithelial layers during infection and inflammatory responses to maintain tissue integrity. Affects multiple actin-mediated functions in activated neutrophils leading to inhibition of phagocytosis, granule exocytosis, and migration. Exert its effects via the type I IL-20 receptor complex consisting of IL20RA and IL20RB.

APPLICATION

To ensure optimal assay performance, AREX recommends conducting reagent titration tailored to each testing system for optimal detection results.

WB	1:500 - 1:2000
IHC	1:50 - 1:200
IF/ICC	1:50 - 1:200

*Results are sample-specific. Please refer to your local assay conditions and test parameters for reference.

PRODUCT OVERVIEW

Description	Rabbit polyclonal antibody to IL-20
Specificity	Recognizes endogenous levels of IL-20 protein
Antibody Type	Primary antibody
Immunogen	Recombinant fusion protein of human IL-20. The exact sequence is proprietary.
Purification	The antibody was purified by immunogen affinity chromatography.
Molecular Weight	Predicted: 17; Observed: 20 kD
Form/Buffer	Liquid in 0.42% Potassium phosphate, 0.87% Sodium chloride, pH 7.3, 30% glycerol, and 0.01% sodium azide.
Alternative Names	ZCYTO10; Interleukin-20; IL-20; Cytokine Zcyto10
Gene Symbol	IL20
Entrez Gene	50604(Human); 58181(Mouse)
SwissProt	Q9NYY1(Human); Q9JKV9(Mouse)

*AREX continuously optimizes our products. Webpage content may not reflect the latest updates. For inquiries, please contact info@arexbio.com or your local distributor.

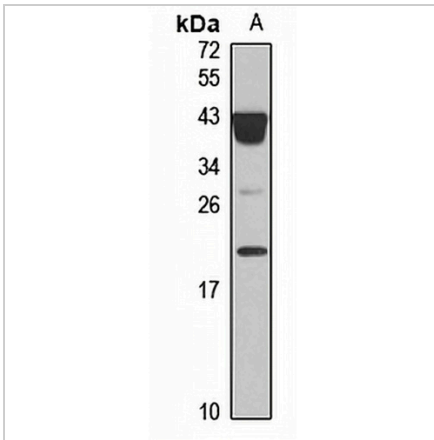
*Clone Number, Reactivity, Source/Host and Clonality can be found in the product name and Key Features section above.

DATASHEET

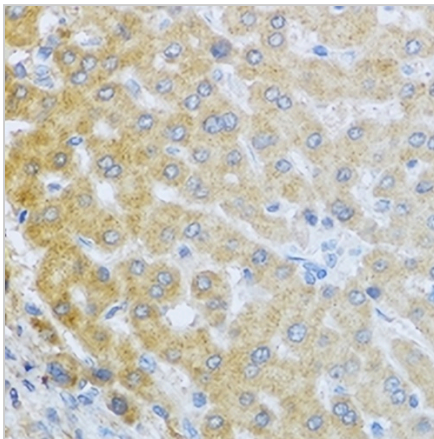
IL-20 Rabbit Polyclonal Antibody

CAT. NO. APA15909

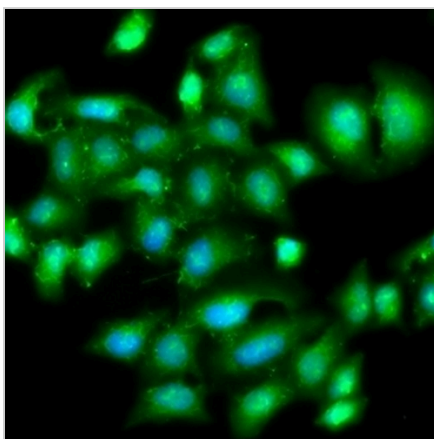
DATA



Western blot analysis of IL-20 expression in mouse liver (A) whole cell lysates. (Predicted band size: 17; 20 kD; Observed band size: 20 kD)



Immunohistochemical analysis of IL-20 staining in human liver formalin fixed paraffin embedded tissue section. The section was pre-treated using heat mediated antigen retrieval with sodium citrate buffer (pH 6.0). The section was then incubated with the antibody at room temperature and detected using an HRP conjugated compact polymer system. DAB was used as the chromogen. The section was then counterstained with haematoxylin and mounted with DPX.



Immunofluorescent analysis of IL-20 staining in A549 cells. Formalin-fixed cells were permeabilized with 0.1% Triton X-100 in TBS for 5-10 minutes and blocked with 3% BSA-PBS for 30 minutes at room temperature. Cells were probed with the primary antibody in 3% BSA-PBS and incubated overnight at 4 °C in a humidified chamber. Cells were washed with PBST and incubated with a Alexa Fluor 488-conjugated secondary antibody (green) in PBS at room temperature in the dark.

STORAGE

Store at 4°C short term. For long term storage, store at -20°C, avoiding freeze/thaw cycles.

NOTE

For Research Use Only. Not for diagnostic, therapeutics, prophylactic or in vivo use.