

DATASHEET

IL-22R Rabbit Polyclonal Antibody

CAT. NO. APA15910

KEY FEATURES

Target	IL-22R	Source / Host	Rabbit
Reactivity	Human, Mouse	Clonality	Polyclonal
Applications	WB	Conjugation	Unconjugated
Form / Buffer	Liquid in 0.42% Potassium phosphate, 0.87% Sodium chloride, pH 7.3, 30% glycerol, and 0.01% sodium azide.		Storage at -20°C

BACKGROUND

Component of the receptor for IL20, IL22 and IL24. Component of IL22 receptor formed by IL22RA1 and IL10RB enabling IL22 signaling via JAK/STAT pathways. IL22 also induces activation of MAPK1/MAPK3 and Akt kinases pathways. Component of one of the receptor for IL20 and IL24 formed by IL22RA1 and IL20RB also signaling through STATs activation. Mediates IL24 antiangiogenic activity as well as IL24 inhibitory effect on endothelial cell tube formation and differentiation.

APPLICATION

To ensure optimal assay performance, AREX recommends conducting reagent titration tailored to each testing system for optimal detection results.

WB	1:500 - 1:2000
----	----------------

*Results are sample-specific. Please refer to your local assay conditions and test parameters for reference.

PRODUCT OVERVIEW

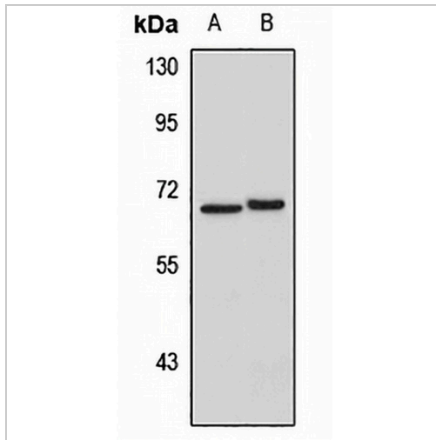
Description	Rabbit polyclonal antibody to IL-22R
Specificity	Recognizes endogenous levels of IL-22R protein
Antibody Type	Primary antibody
Immunogen	KLH-conjugated synthetic peptide of human IL-22R. The exact sequence is proprietary.
Purification	The antibody was purified by immunogen affinity chromatography.
Molecular Weight	Predicted: 63 kD; Observed: 68 kD
Form/Buffer	Liquid in 0.42% Potassium phosphate, 0.87% Sodium chloride, pH 7.3, 30% glycerol, and 0.01% sodium azide.
Alternative Names	IL22R; Interleukin-22 receptor subunit alpha-1; IL-22 receptor subunit alpha-1; IL-22R-alpha-1; IL-22RA1; Cytokine receptor class-II member 9; Cytokine receptor family 2 member 9; CRF2-9; ZcytoR11
Gene Symbol	IL22RA1
Entrez Gene	58985(Human)
SwissProt	Q8N6P7(Human)

*AREX continuously optimizes our products. Webpage content may not reflect the latest updates. For inquiries, please contact info@arexbio.com or your local distributor.

*Clone Number, Reactivity, Source/Host and Clonality can be found in the product name and Key Features section above.

DATASHEET**IL-22R Rabbit Polyclonal Antibody**

CAT. NO. APA15910

DATA

Western blot analysis of IL-22R expression in U87MG (A), HepG2 (B) whole cell lysates.
(Predicted band size: 63 kD; Observed band size: 68 kD)

STORAGE

Store at 4°C short term. For long term storage, store at -20°C, avoiding freeze/thaw cycles.

NOTE

For Research Use Only. Not for diagnostic, therapeutics, prophylactic or in vivo use.