

**DATASHEET**

**IMPA2 Rabbit Polyclonal Antibody**

CAT. NO. APA15912

**KEY FEATURES**

Target	IMPA2	Source / Host	Rabbit
Reactivity	Human, Mouse, Rat	Clonality	Polyclonal
Applications	WB, IF/ICC	Conjugation	Unconjugated
Form / Buffer	Liquid in 0.42% Potassium phosphate, 0.87% Sodium chloride, pH 7.3, 30% glycerol, and 0.01% sodium azide.		Storage at -20°C

**BACKGROUND**

Phosphatase that can use myo-inositol monophosphates, myo-inositol 1,4-diphosphate, scyllo-inositol-1,4-diphosphate, glucose-1-phosphate, beta-glycerophosphate and 2'-AMP as substrates in vitro . It is likely that IMPA2 has an as yet unidentified in vivo substrate(s) . Has been implicated as the pharmacological target for lithium (Li(+)) action in brain .

**APPLICATION**

To ensure optimal assay performance, AREX recommends conducting reagent titration tailored to each testing system for optimal detection results.

WB	1:500 - 1:2000
IF/ICC	1:50 - 1:200

\*Results are sample-specific. Please refer to your local assay conditions and test parameters for reference.

**PRODUCT OVERVIEW**

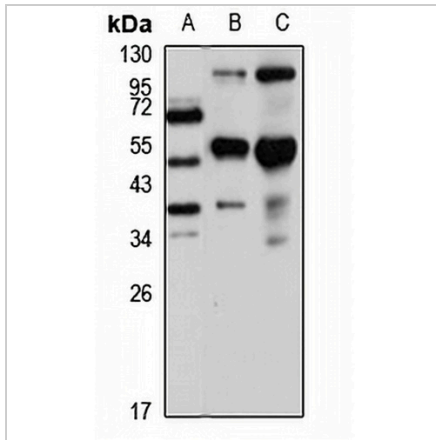
Description	Rabbit polyclonal antibody to IMPA2
Specificity	Recognizes endogenous levels of IMPA2 protein
Antibody Type	Primary antibody
Immunogen	Recombinant fusion protein of human IMPA2. The exact sequence is proprietary.
Purification	The antibody was purified by immunogen affinity chromatography.
Molecular Weight	Predicted: 28; Observed: 37 kD
Form/Buffer	Liquid in 0.42% Potassium phosphate, 0.87% Sodium chloride, pH 7.3, 30% glycerol, and 0.01% sodium azide.
Alternative Names	IMP.18P; Inositol monophosphatase 2; IMP 2; IMPase 2; Inositol-1(or 4)-monophosphatase 2; Myo-inositol monophosphatase A2
Gene Symbol	IMPA2
Entrez Gene	3613(Human); 114663(Mouse); 282636(Rat)
SwissProt	O14732(Human); Q91UZ5(Mouse); Q8CIN7(Rat)

\*AREX continuously optimizes our products. Webpage content may not reflect the latest updates. For inquiries, please contact [info@arexbio.com](mailto:info@arexbio.com) or your local distributor.

\*Clone Number, Reactivity, Source/Host and Clonality can be found in the product name and Key Features section above.

**DATASHEET****IMPA2 Rabbit Polyclonal Antibody**

CAT. NO. APA15912

**DATA**

Western blot analysis of IMPA2 expression in SW620 (A), mouse brain (B), rat kidney (C) whole cell lysates. (Predicted band size: 28; 31 kD; Observed band size: 37 kD)

**STORAGE**

Store at 4°C short term. For long term storage, store at -20°C, avoiding freeze/thaw cycles.

**NOTE**

For Research Use Only. Not for diagnostic, therapeutics, prophylactic or in vivo use.