

DATASHEET

INF2 Rabbit Polyclonal Antibody

CAT. NO. APA15913

KEY FEATURES

Target	INF2	Source / Host	Rabbit
Reactivity	Human, Mouse	Clonality	Polyclonal
Applications	WB	Conjugation	Unconjugated
Form / Buffer	Liquid in 0.42% Potassium phosphate, 0.87% Sodium chloride, pH 7.3, 30% glycerol, and 0.01% sodium azide.		Storage at -20°C

BACKGROUND

Severs actin filaments and accelerates their polymerization and depolymerization.

APPLICATION

To ensure optimal assay performance, AREX recommends conducting reagent titration tailored to each testing system for optimal detection results.

WB	1:500 - 1:2000
----	----------------

*Results are sample-specific. Please refer to your local assay conditions and test parameters for reference.

PRODUCT OVERVIEW

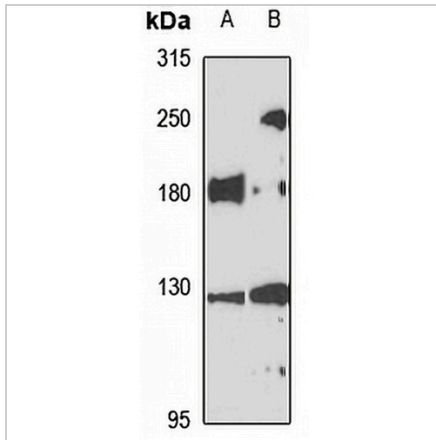
Description	Rabbit polyclonal antibody to INF2
Specificity	Recognizes endogenous levels of INF2 protein
Antibody Type	Primary antibody
Immunogen	Recombinant fusion protein of human INF2. The exact sequence is proprietary.
Purification	The antibody was purified by immunogen affinity chromatography.
Molecular Weight	Predicted: 25; Observed: 180 kD
Form/Buffer	Liquid in 0.42% Potassium phosphate, 0.87% Sodium chloride, pH 7.3, 30% glycerol, and 0.01% sodium azide.
Alternative Names	C14orf151; C14orf173; Inverted formin-2; HBEBP2-binding protein C
Gene Symbol	INF2
Entrez Gene	64423(Human); 70435(Mouse)
SwissProt	Q27J81(Human); Q0GNC1(Mouse)

*AREX continuously optimizes our products. Webpage content may not reflect the latest updates. For inquiries, please contact info@arexbio.com or your local distributor.

*Clone Number, Reactivity, Source/Host and Clonality can be found in the product name and Key Features section above.

DATASHEET**INF2 Rabbit Polyclonal Antibody**

CAT. NO. APA15913

DATA

Western blot analysis of INF2 expression in HeLa (A), HepG2 (B) whole cell lysates.
(Predicted band size: 25; 134; 135 kD; Observed band size: 180 kD)

STORAGE

Store at 4°C short term. For long term storage, store at -20°C, avoiding freeze/thaw cycles.

NOTE

For Research Use Only. Not for diagnostic, therapeutics, prophylactic or in vivo use.