

**DATASHEET**

**INPP4B Rabbit Polyclonal Antibody**

CAT. NO. APA15916

**KEY FEATURES**

Target	INPP4B	Source / Host	Rabbit
Reactivity	Human, Mouse, Rat	Clonality	Polyclonal
Applications	WB	Conjugation	Unconjugated
Form / Buffer	Liquid in 0.42% Potassium phosphate, 0.87% Sodium chloride, pH 7.3, 30% glycerol, and 0.01% sodium azide.		Storage at-20°C

**BACKGROUND**

Catalyzes the hydrolysis of the 4-position phosphate of phosphatidylinositol 3,4-bisphosphate, inositol 1,3,4-trisphosphate and inositol 3,4-trisphosphate . Plays a role in the late stages of macropinocytosis by dephosphorylating phosphatidylinositol 3,4-bisphosphate in membrane ruffles . The lipid phosphatase activity is critical for tumor suppressor function. Antagonizes the PI3K-AKT/PKB signaling pathway by dephosphorylating phosphoinositides and thereby modulating cell cycle progression and cell survival .

**APPLICATION**

To ensure optimal assay performance, AREX recommends conducting reagent titration tailored to each testing system for optimal detection results.

WB	1:500 - 1:2000
----	----------------

\*Results are sample-specific. Please refer to your local assay conditions and test parameters for reference.

**PRODUCT OVERVIEW**

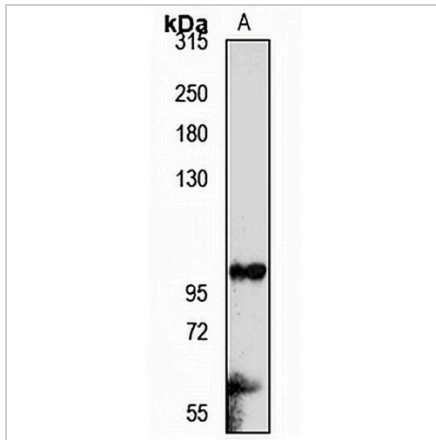
Description	Rabbit polyclonal antibody to INPP4B
Specificity	Recognizes endogenous levels of INPP4B protein
Antibody Type	Primary antibody
Immunogen	Recombinant fusion protein of human INPP4B. The exact sequence is proprietary.
Purification	The antibody was purified by immunogen affinity chromatography.
Molecular Weight	Predicted: 14; Observed: 98 kD
Form/Buffer	Liquid in 0.42% Potassium phosphate, 0.87% Sodium chloride, pH 7.3, 30% glycerol, and 0.01% sodium azide.
Alternative Names	Type II inositol 3 4-bisphosphate 4-phosphatase; Inositol polyphosphate 4-phosphatase type II
Gene Symbol	INPP4B
Entrez Gene	8821(Human); 234515(Mouse); 116699(Rat)
SwissProt	O15327(Human); Q6P1Y8(Mouse); Q9QWG5(Rat)

\*AREX continuously optimizes our products. Webpage content may not reflect the latest updates. For inquiries, please contact [info@arexbio.com](mailto:info@arexbio.com) or your local distributor.

\*Clone Number, Reactivity, Source/Host and Clonality can be found in the product name and Key Features section above.

**DATASHEET****INPP4B Rabbit Polyclonal Antibody**

CAT. NO. APA15916

**DATA**

Western blot analysis of INPP4B expression in A375 (A) whole cell lysates. (Predicted band size: 14; 104 kD; Observed band size: 98 kD)

**STORAGE**

Store at 4°C short term. For long term storage, store at -20°C, avoiding freeze/thaw cycles.

**NOTE**

For Research Use Only. Not for diagnostic, therapeutics, prophylactic or in vivo use.