

DATASHEET

IRF-2BP1 Rabbit Polyclonal Antibody

CAT. NO. APA15927

KEY FEATURES

Target	IRF-2BP1	Source / Host	Rabbit
Reactivity	Human, Mouse	Clonality	Polyclonal
Applications	WB	Conjugation	Unconjugated
Form / Buffer	Liquid in 0.42% Potassium phosphate, 0.87% Sodium chloride, pH 7.3, 30% glycerol, and 0.01% sodium azide.		Storage at -20°C

BACKGROUND

Acts as a transcriptional corepressor in a IRF2-dependent manner; this repression is not mediated by histone deacetylase activities. May act as an E3 ligase towards JDP2, enhancing its polyubiquitination. Represses ATF2-dependent transcriptional activation.

APPLICATION

To ensure optimal assay performance, AREX recommends conducting reagent titration tailored to each testing system for optimal detection results.

WB	1:500 - 1:2000
----	----------------

*Results are sample-specific. Please refer to your local assay conditions and test parameters for reference.

PRODUCT OVERVIEW

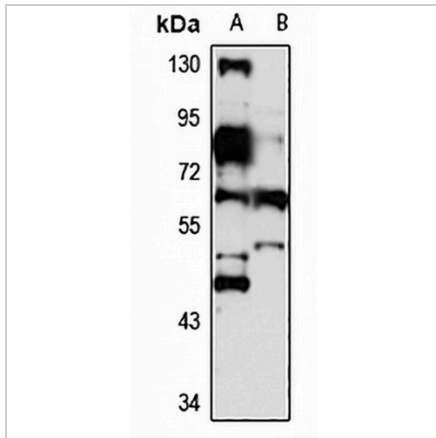
Description	Rabbit polyclonal antibody to IRF-2BP1
Specificity	Recognizes endogenous levels of IRF-2BP1 protein
Antibody Type	Primary antibody
Immunogen	Recombinant fusion protein of human IRF-2BP1. The exact sequence is proprietary.
Purification	The antibody was purified by immunogen affinity chromatography.
Molecular Weight	Predicted: 61 kD; Observed: 62 kD
Form/Buffer	Liquid in 0.42% Potassium phosphate, 0.87% Sodium chloride, pH 7.3, 30% glycerol, and 0.01% sodium azide.
Alternative Names	Interferon regulatory factor 2-binding protein 1; IRF-2-binding protein 1; IRF-2BP1; Probable E3 ubiquitin-protein ligase IRF2BP1
Gene Symbol	IRF2BP1
Entrez Gene	26145(Human); 272359(Mouse)
SwissProt	Q8IU81(Human); Q8R3Y8(Mouse)

*AREX continuously optimizes our products. Webpage content may not reflect the latest updates. For inquiries, please contact info@arexbio.com or your local distributor.

*Clone Number, Reactivity, Source/Host and Clonality can be found in the product name and Key Features section above.

DATASHEET**IRF-2BP1 Rabbit Polyclonal Antibody**

CAT. NO. APA15927

DATA

Western blot analysis of IRF-2BP1 expression in HeLa (A), mouse eye (B) whole cell lysates. (Predicted band size: 61 kD; Observed band size: 62 kD)

STORAGE

Store at 4°C short term. For long term storage, store at -20°C, avoiding freeze/thaw cycles.

NOTE

For Research Use Only. Not for diagnostic, therapeutics, prophylactic or in vivo use.