

DATASHEET

ISG20 Rabbit Polyclonal Antibody

CAT. NO. APA15928

KEY FEATURES

Target	ISG20	Source / Host	Rabbit
Reactivity	Human, Mouse, Rat	Clonality	Polyclonal
Applications	WB, IHC	Conjugation	Unconjugated
Form / Buffer	Liquid in 0.42% Potassium phosphate, 0.87% Sodium chloride, pH 7.3, 30% glycerol, and 0.01% sodium azide.		Storage at-20°C

BACKGROUND

Interferon-induced antiviral exoribonuclease that acts mainly on single-stranded RNA . Exhibits antiviral activity against RNA viruses including hepatitis C virus (HCV), hepatitis A virus (HAV) and yellow fever virus (YFV) . Inhibition of several viruses such as chikungunya virus (CHIKV) does not involve the degradation of viral RNAs, but rather the inhibition of translation of viral proteins . Exerts a translational control over a large panel of non-self RNA substrates while sparing endogenous transcripts. This activity correlates with the protein's ability to localize in cytoplasmic processing bodies . May also act as master regulator of over hundred interferon stimulated genes leading to viral genome translation inhibition .

APPLICATION

To ensure optimal assay performance, AREX recommends conducting reagent titration tailored to each testing system for optimal detection results.

WB	1:500 - 1:2000
IHC	1:50 - 1:200

*Results are sample-specific. Please refer to your local assay conditions and test parameters for reference.

PRODUCT OVERVIEW

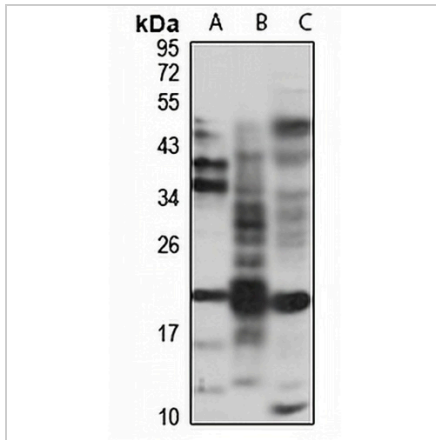
Description	Rabbit polyclonal antibody to ISG20
Specificity	Recognizes endogenous levels of ISG20 protein
Antibody Type	Primary antibody
Immunogen	Recombinant fusion protein of human ISG20. The exact sequence is proprietary.
Purification	The antibody was purified by immunogen affinity chromatography.
Molecular Weight	Predicted: 9; Observed: 20 kD
Form/Buffer	Liquid in 0.42% Potassium phosphate, 0.87% Sodium chloride, pH 7.3, 30% glycerol, and 0.01% sodium azide.
Alternative Names	HEM45; Interferon-stimulated gene 20 kDa protein; Estrogen-regulated transcript 45 protein; Promyelocytic leukemia nuclear body-associated protein ISG20
Gene Symbol	ISG20
Entrez Gene	3669(Human); 57444(Mouse)
SwissProt	Q96AZ6(Human); Q9JL16(Mouse)

*AREX continuously optimizes our products. Webpage content may not reflect the latest updates. For inquiries, please contact info@arexbio.com or your local distributor.

*Clone Number, Reactivity, Source/Host and Clonality can be found in the product name and Key Features section above.

DATASHEET**ISG20 Rabbit Polyclonal Antibody**

CAT. NO. APA15928

DATA

Western blot analysis of ISG20 expression in A549 (A), mouse spleen (B), rat spleen (C) whole cell lysates. (Predicted band size: 9; 20 kD; Observed band size: 20 kD)

STORAGE

Store at 4°C short term. For long term storage, store at -20°C, avoiding freeze/thaw cycles.

NOTE

For Research Use Only. Not for diagnostic, therapeutics, prophylactic or in vivo use.