

DATASHEET

IST1 Rabbit Polyclonal Antibody

CAT. NO. APA15929

KEY FEATURES

Target	IST1	Source / Host	Rabbit
Reactivity	Human, Mouse, Rat	Clonality	Polyclonal
Applications	WB	Conjugation	Unconjugated
Form / Buffer	Liquid in 0.42% Potassium phosphate, 0.87% Sodium chloride, pH 7.3, 30% glycerol, and 0.01% sodium azide.		Storage at-20°C

BACKGROUND

ESCRT-III-like protein involved in cytokinesis, nuclear envelope reassembly and endosomal tubulation . Is required for efficient abscission during cytokinesis . Involved in recruiting VPS4A and/or VPS4B to the midbody of dividing cells . During late anaphase, involved in nuclear envelope reassembly and mitotic spindle disassembly together with the ESCRT-III complex: IST1 acts by mediating the recruitment of SPAST to the nuclear membrane, leading to microtubule severing . Recruited to the reforming nuclear envelope (NE) during anaphase by LEMD2 . Regulates early endosomal tubulation together with the ESCRT-III complex by mediating the recruitment of SPAST .

APPLICATION

To ensure optimal assay performance, AREX recommends conducting reagent titration tailored to each testing system for optimal detection results.

WB	1:500 - 1:2000
----	----------------

*Results are sample-specific. Please refer to your local assay conditions and test parameters for reference.

PRODUCT OVERVIEW

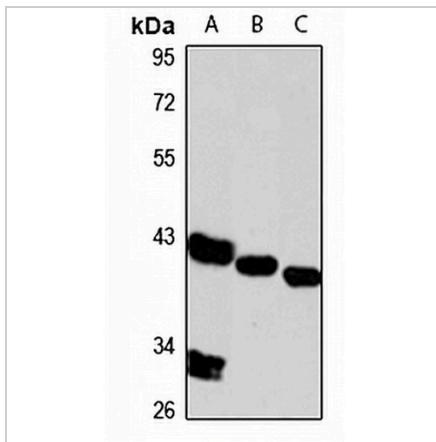
Description	Rabbit polyclonal antibody to IST1
Specificity	Recognizes endogenous levels of IST1 protein
Antibody Type	Primary antibody
Immunogen	Recombinant fusion protein of human IST1. The exact sequence is proprietary.
Purification	The antibody was purified by immunogen affinity chromatography.
Molecular Weight	Predicted: 23; Observed: 39 kD
Form/Buffer	Liquid in 0.42% Potassium phosphate, 0.87% Sodium chloride, pH 7.3, 30% glycerol, and 0.01% sodium azide.
Alternative Names	KIAA0174; IST1 homolog; hIST1; Putative MAPK-activating protein PM28
Gene Symbol	IST1
Entrez Gene	9798(Human); 71955(Mouse); 307833(Rat)
SwissProt	P53990(Human); Q9CX00(Mouse); Q568Z6(Rat)

*AREX continuously optimizes our products. Webpage content may not reflect the latest updates. For inquiries, please contact info@arexbio.com or your local distributor.

*Clone Number, Reactivity, Source/Host and Clonality can be found in the product name and Key Features section above.

DATASHEET**IST1 Rabbit Polyclonal Antibody**

CAT. NO. APA15929

DATA

Western blot analysis of IST1 expression in HeLa (A), mouse heart (B), rat brain (C) whole cell lysates. (Predicted band size: 23; 36; 39; 41 kD; Observed band size: 39 kD)

STORAGE

Store at 4°C short term. For long term storage, store at -20°C, avoiding freeze/thaw cycles.

NOTE

For Research Use Only. Not for diagnostic, therapeutics, prophylactic or in vivo use.