

DATASHEET

ISYNA1 Rabbit Polyclonal Antibody

CAT. NO. APA15930

KEY FEATURES

Target	ISYNA1	Source / Host	Rabbit
Reactivity	Human, Mouse, Rat	Clonality	Polyclonal
Applications	WB	Conjugation	Unconjugated
Form / Buffer	Liquid in 0.42% Potassium phosphate, 0.87% Sodium chloride, pH 7.3, 30% glycerol, and 0.01% sodium azide.		Storage at-20°C

BACKGROUND

Key enzyme in myo-inositol biosynthesis pathway that catalyzes the conversion of glucose 6-phosphate to 1-myo-inositol 1-phosphate in a NAD-dependent manner . Rate-limiting enzyme in the synthesis of all inositol-containing compounds .

APPLICATION

To ensure optimal assay performance, AREX recommends conducting reagent titration tailored to each testing system for optimal detection results.

WB	1:500 - 1:2000
----	----------------

*Results are sample-specific. Please refer to your local assay conditions and test parameters for reference.

PRODUCT OVERVIEW

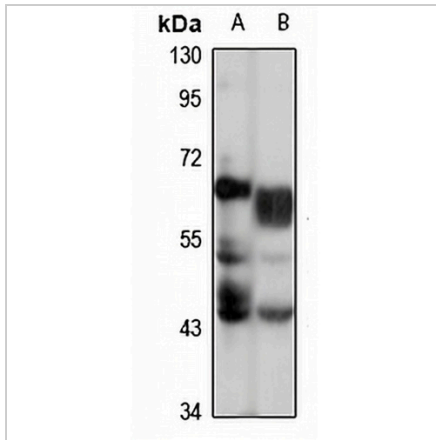
Description	Rabbit polyclonal antibody to ISYNA1
Specificity	Recognizes endogenous levels of ISYNA1 protein
Antibody Type	Primary antibody
Immunogen	Recombinant fusion protein of human ISYNA1. The exact sequence is proprietary.
Purification	The antibody was purified by immunogen affinity chromatography.
Molecular Weight	Predicted: 47; Observed: 61 kD
Form/Buffer	Liquid in 0.42% Potassium phosphate, 0.87% Sodium chloride, pH 7.3, 30% glycerol, and 0.01% sodium azide.
Alternative Names	INO1; Inositol-3-phosphate synthase 1; IPS 1; Myo-inositol 1-phosphate synthase; MI-1-P synthase; MIP synthase; hIPS; Myo-inositol 1-phosphate synthase A1; hINO1
Gene Symbol	ISYNA1
Entrez Gene	51477(Human); 71780(Mouse); 290651(Rat)
SwissProt	Q9NPH2(Human); Q9JHU9(Mouse); Q6AYK3(Rat)

*AREX continuously optimizes our products. Webpage content may not reflect the latest updates. For inquiries, please contact info@arexbio.com or your local distributor.

*Clone Number, Reactivity, Source/Host and Clonality can be found in the product name and Key Features section above.

DATASHEET**ISYNA1 Rabbit Polyclonal Antibody**

CAT. NO. APA15930

DATA**STORAGE**

Store at 4°C short term. For long term storage, store at -20°C, avoiding freeze/thaw cycles.

NOTE

For Research Use Only. Not for diagnostic, therapeutics, prophylactic or in vivo use.