

**DATASHEET**

**Integrin alpha 11 Rabbit Polyclonal Antibody**

CAT. NO. APA15933

**KEY FEATURES**

Target	Integrin alpha 11	Source / Host	Rabbit
Reactivity	Human, Mouse	Clonality	Polyclonal
Applications	WB	Conjugation	Unconjugated
Form / Buffer	Liquid in 0.42% Potassium phosphate, 0.87% Sodium chloride, pH 7.3, 30% glycerol, and 0.01% sodium azide.		Storage at -20°C

**BACKGROUND**

Integrin alpha-11/beta-1 is a receptor for collagen.

**APPLICATION**

To ensure optimal assay performance, AREX recommends conducting reagent titration tailored to each testing system for optimal detection results.

WB	1:500 - 1:2000
----	----------------

\*Results are sample-specific. Please refer to your local assay conditions and test parameters for reference.

**PRODUCT OVERVIEW**

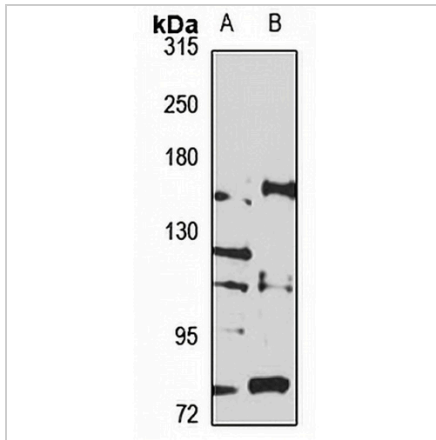
Description	Rabbit polyclonal antibody to Integrin alpha 11
Specificity	Recognizes endogenous levels of Integrin alpha 11 protein
Antibody Type	Primary antibody
Immunogen	Recombinant fusion protein of human Integrin alpha 11. The exact sequence is proprietary.
Purification	The antibody was purified by immunogen affinity chromatography.
Molecular Weight	Predicted: 133 kD; Observed: 160 kD
Form/Buffer	Liquid in 0.42% Potassium phosphate, 0.87% Sodium chloride, pH 7.3, 30% glycerol, and 0.01% sodium azide.
Alternative Names	Integrin alpha-11
Gene Symbol	ITGA11
Entrez Gene	22801(Human)
SwissProt	Q9UKX5(Human); P61622(Mouse)

\*AREX continuously optimizes our products. Webpage content may not reflect the latest updates. For inquiries, please contact [info@arexbio.com](mailto:info@arexbio.com) or your local distributor.

\*Clone Number, Reactivity, Source/Host and Clonality can be found in the product name and Key Features section above.

**DATASHEET****Integrin alpha 11 Rabbit Polyclonal Antibody**

CAT. NO. APA15933

**DATA**

Western blot analysis of Integrin alpha 11 expression in HeLa (A), SHSY5Y (B) whole cell lysates. (Predicted band size: 133 kD; Observed band size: 160 kD)

**STORAGE**

Store at 4°C short term. For long term storage, store at -20°C, avoiding freeze/thaw cycles.

**NOTE**

For Research Use Only. Not for diagnostic, therapeutics, prophylactic or in vivo use.