

**DATASHEET**

**Emt Rabbit Polyclonal Antibody**

CAT. NO. APA15936

**KEY FEATURES**

Target	Emt	Source / Host	Rabbit
Reactivity	Human, Mouse	Clonality	Polyclonal
Applications	WB	Conjugation	Unconjugated
Form / Buffer	Liquid in 0.42% Potassium phosphate, 0.87% Sodium chloride, pH 7.3, 30% glycerol, and 0.01% sodium azide.		Storage at-20°C

**BACKGROUND**

Tyrosine kinase that plays an essential role in regulation of the adaptive immune response. Regulates the development, function and differentiation of conventional T-cells and nonconventional NKT-cells. When antigen presenting cells (APC) activate T-cell receptor (TCR), a series of phosphorylation lead to the recruitment of ITK to the cell membrane, in the vicinity of the stimulated TCR receptor, where it is phosphorylated by LCK. Phosphorylation leads to ITK autophosphorylation and full activation. Once activated, phosphorylates PLCG1, leading to the activation of this lipase and subsequent cleavage of its substrates.

**APPLICATION**

To ensure optimal assay performance, AREX recommends conducting reagent titration tailored to each testing system for optimal detection results.

WB	1:500 - 1:2000
----	----------------

\*Results are sample-specific. Please refer to your local assay conditions and test parameters for reference.

**PRODUCT OVERVIEW**

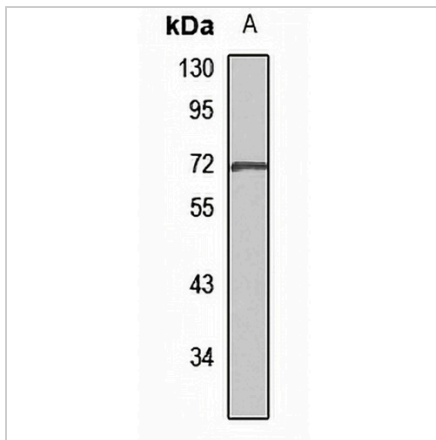
Description	Rabbit polyclonal antibody to Emt
Specificity	Recognizes endogenous levels of Emt protein
Antibody Type	Primary antibody
Immunogen	KLH-conjugated synthetic peptide of human Emt. The exact sequence is proprietary.
Purification	The antibody was purified by immunogen affinity chromatography.
Molecular Weight	Predicted: 71 kD; Observed: 70 kD
Form/Buffer	Liquid in 0.42% Potassium phosphate, 0.87% Sodium chloride, pH 7.3, 30% glycerol, and 0.01% sodium azide.
Alternative Names	EMT; LYK; Tyrosine-protein kinase ITK/TSK; Interleukin-2-inducible T-cell kinase; IL-2-inducible T-cell kinase; Kinase EMT; T-cell-specific kinase; Tyrosine-protein kinase Lyk
Gene Symbol	ITK
Entrez Gene	3702(Human); 16428(Mouse)
SwissProt	Q08881(Human); Q03526(Mouse)

\*AREX continuously optimizes our products. Webpage content may not reflect the latest updates. For inquiries, please contact [info@arexbio.com](mailto:info@arexbio.com) or your local distributor.

\*Clone Number, Reactivity, Source/Host and Clonality can be found in the product name and Key Features section above.

**DATASHEET****Emt Rabbit Polyclonal Antibody**

CAT. NO. APA15936

**DATA**

Western blot analysis of Emt expression in mouse spleen (A) whole cell lysates. (Predicted band size: 71 kD; Observed band size: 70 kD)

**STORAGE**

Store at 4°C short term. For long term storage, store at -20°C, avoiding freeze/thaw cycles.

**NOTE**

For Research Use Only. Not for diagnostic, therapeutics, prophylactic or in vivo use.