

DATASHEET

ITM2C Rabbit Polyclonal Antibody

CAT. NO. APA15937

KEY FEATURES

Target	ITM2C	Source / Host	Rabbit
Reactivity	Human, Mouse, Rat	Clonality	Polyclonal
Applications	WB	Conjugation	Unconjugated
Form / Buffer	Liquid in 0.42% Potassium phosphate, 0.87% Sodium chloride, pH 7.3, 30% glycerol, and 0.01% sodium azide.		Storage at -20°C

BACKGROUND

Negative regulator of amyloid-beta peptide production. May inhibit the processing of APP by blocking its access to alpha- and beta-secretase. Binding to the beta-secretase-cleaved APP C-terminal fragment is negligible, suggesting that ITM2C is a poor gamma-secretase cleavage inhibitor. May play a role in TNF-induced cell death and neuronal differentiation .

APPLICATION

To ensure optimal assay performance, AREX recommends conducting reagent titration tailored to each testing system for optimal detection results.

WB	1:500 - 1:2000
----	----------------

*Results are sample-specific. Please refer to your local assay conditions and test parameters for reference.

PRODUCT OVERVIEW

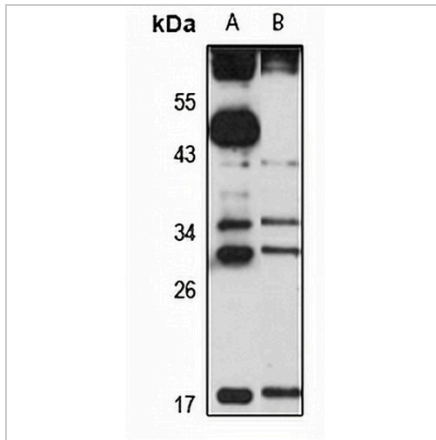
Description	Rabbit polyclonal antibody to ITM2C
Specificity	Recognizes endogenous levels of ITM2C protein
Antibody Type	Primary antibody
Immunogen	Recombinant fusion protein of human ITM2C. The exact sequence is proprietary.
Purification	The antibody was purified by immunogen affinity chromatography.
Molecular Weight	Predicted: 24; Observed: 30 kD
Form/Buffer	Liquid in 0.42% Potassium phosphate, 0.87% Sodium chloride, pH 7.3, 30% glycerol, and 0.01% sodium azide.
Alternative Names	BRI3; Integral membrane protein 2C; Cerebral protein 14; Transmembrane protein BRI3
Gene Symbol	ITM2C
Entrez Gene	81618(Human); 64294(Mouse); 301575(Rat)
SwissProt	Q9NQX7(Human); Q91VK4(Mouse); Q5PQL7(Rat)

*AREX continuously optimizes our products. Webpage content may not reflect the latest updates. For inquiries, please contact info@arexbio.com or your local distributor.

*Clone Number, Reactivity, Source/Host and Clonality can be found in the product name and Key Features section above.

DATASHEET**ITM2C Rabbit Polyclonal Antibody**

CAT. NO. APA15937

DATA

Western blot analysis of ITM2C expression in HeLa (A), MCF7 (B) whole cell lysates.
(Predicted band size: 24; 25; 30 kD; Observed band size: 30 kD)

STORAGE

Store at 4°C short term. For long term storage, store at -20°C, avoiding freeze/thaw cycles.

NOTE

For Research Use Only. Not for diagnostic, therapeutics, prophylactic or in vivo use.